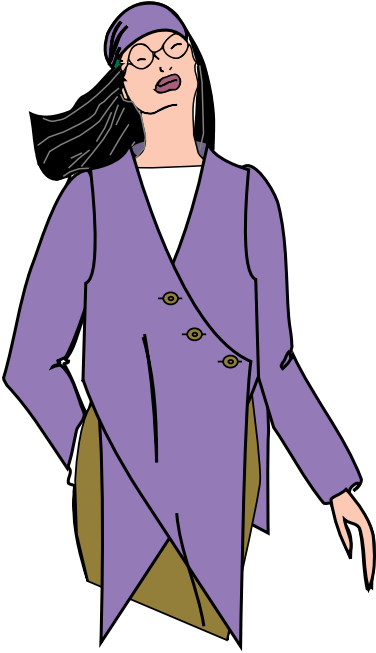


Style Set 2 for Garment Designer



Welcome to Style Set 2.
This set provides you with 50+ additional
style elements that will mix and match
with the original Garment Designer &
Style Set 1 styles .

Key to Style Information/Illustrations

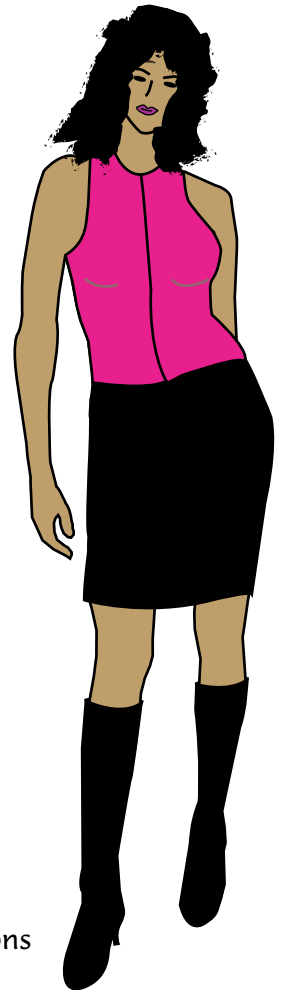
Red Lines/Curves: Show you new points involved in the style,
plus the segments (either straight or curved) that exist with
the style. Use this information to assist you in choosing
styles for custom design ideas.

Black/Red Lines: Show you the pattern built through the
combination of style menus.

Combination: The style menu options chosen for the style
shown. Use these as inspiration.

Illustration: Further inspiration.

Comments: Helpful information about the style.



Thanks to Jon Balcalski, Mesa College (San Diego) student, who assisted with the illustrations
as part of his Honors Computer Fashion course.



Installation:

Double-click on the StyleSet2Installer file found on the CD you have received with this package. The installation will happen automatically. Various files will be updated in your Garment Designer folder.


Note:

1. The Style Set 2 installation will update your Garment Designer application file. It will also update your Style Set 1 (SS1) file, should you have SS1 installed.
2. It is highly recommended that you only have one copy of Garment Designer on your computer. This will avoid confusing the Installer.
3. With the millions of combinations now available in Garment Designer (with Style Set 1 and Style Set 2), it is likely that there is a style combination that simply cannot work, or doesn't work properly. This booklet should alert you to known impossibilities. Please contact Cochenille if you have any problems or questions. Contact techsupport@cochenille.com.

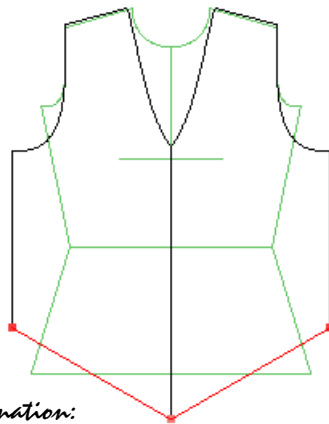
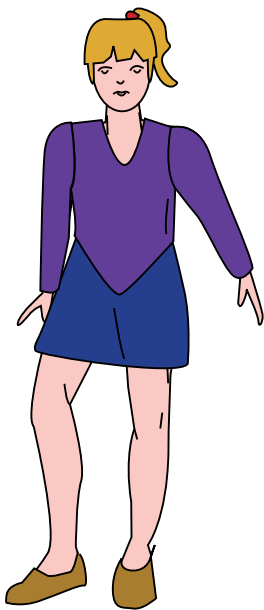
What's New with the Garment Designer application file?

- ◆ User feedback has allowed us to see that people need and want more information regarding the building of armholes and sleeve caps. We have thus added informational warning messages that will appear if you are tweaking your armhole (for a set-in sleeve styles) in such a manner that a good armhole and sleeve will not result. The new warnings help you to see what the potential problem is.
- ◆ We also narrowed the width of the V-necklines slightly.
- ◆ The sleeveless style was changed to prevent angled sideseams that occurred if you moved between multiple style menus. Since the armhole builds after the body style, angled side seams occasionally occurred. Now they do not, but you will need to ensure that the armhole fits close enough to the body (as per your taste).
- ◆ The minimum gauge was lowered to .2 stitches per inch. This will better serve the modular knitting audience as well as people who crochet.

What's New with the update to Style Set 1?

- ◆ We added grey straight of grain lines to the asymmetrical styles.
 - ◆ We also added grey lines to indicate the foldlines on foldback collar styles (as we did in Style Set 2).
- 

Top Style: Tip Center Angle

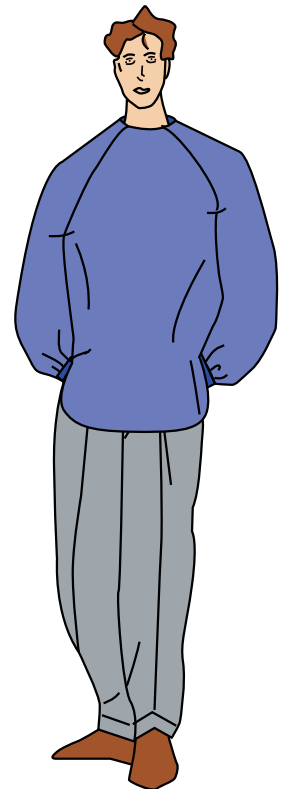
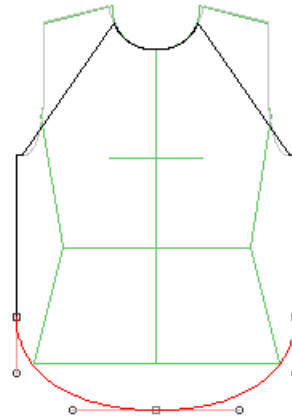


Combination:
 Category: Top
 Top Group: Basic
 Top Style: Tip CF Angle
 Shoulder: Sloped
 Neck Group: V
 Neck Style: Medium Curved
 Darts: None
 Sleeve Group: Separate
 Sleeve Style: Set-In Standard
 Combo: None
 Armhole: Standard
 Sleeve Shape: Tapered
 Sleeve Length: Long

Comments:

- ◆ Garment length is measured to the lower side seam point.
- ◆ Most of the Asymmetrical neck styles will extend straight from the CF line (as opposed to continuing on the angle).

Top Style: Tip Center Curve

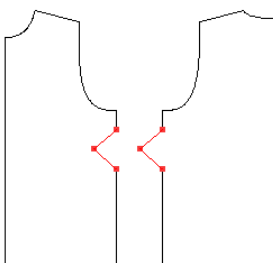
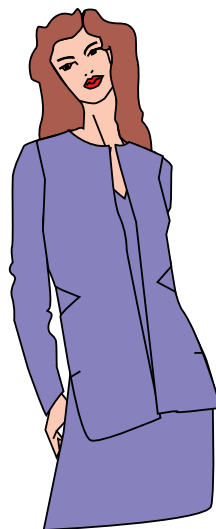
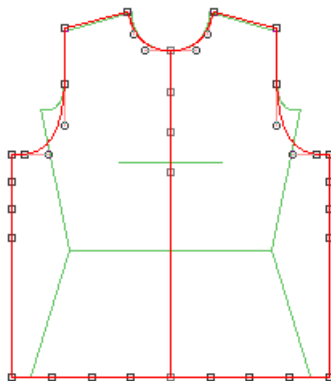


Combination:
 Category: Top
 Top Group: Basic
 Top Style: Tip CF Curve
 Shoulder: Sloped
 Neck Group: Round
 Neck Style: Standard
 Darts: None
 Sleeve Group: Separate
 Sleeve Style: Set-In
 Combo: Raglan
 Armhole: Standard
 Sleeve Shape: Straight
 Sleeve Length: Long

Comments:

- ◆ Garment length is measured to the lower side seam point.

Top Style: Average More Points



Combination:

Category: Top
 Top Group: Basic
 Top Style: Average More Points
 Shoulder: Sloped
 Neck Group: Round
 Neck Style: Standard
 Darts: None
 Sleeve Group: Separate
 Sleeve Style: Set-In Standard
 Combo: None
 Armhole: Standard
 Sleeve Shape: Tapered
 Sleeve Length: Long

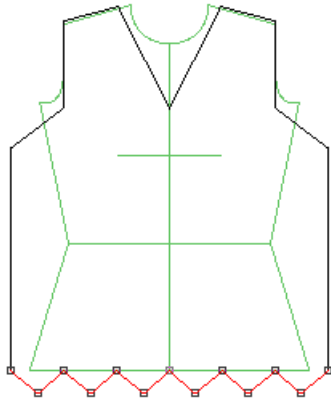
Comments:

- ◆ Extra points may be moved anywhere along the seam.
- ◆ Due to point positioning, this style does not work with all short body styles
- ◆ The illustration here uses Give/Take Symmetry.

Category: Top Top Group: Basic

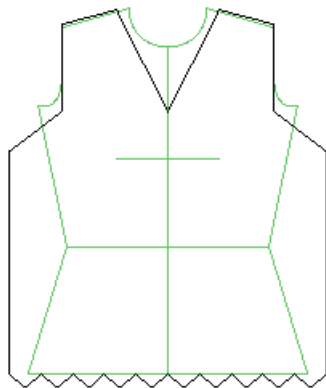
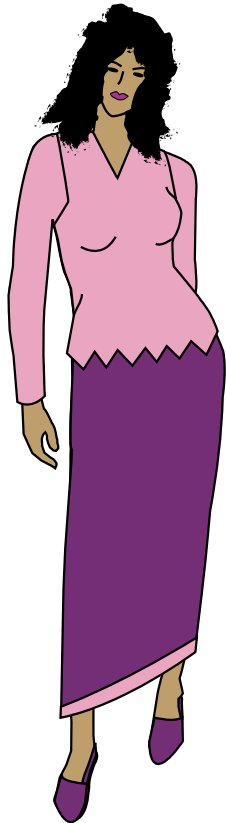
Top Style: Angled Scallop Hem

(Medium or Large)



Combination:

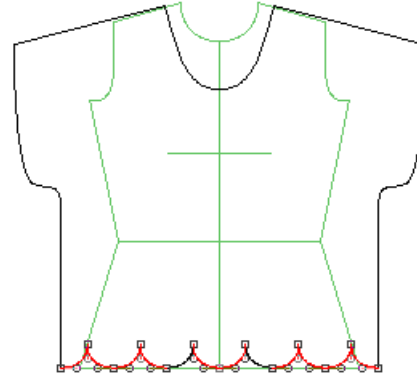
Category: Top
Top Group: Basic
Top Style: Angled Scallop Hem
Shoulder: Sloped
Neck Group: V
Neck Style: High
Darts: None
Sleeve Group: Separate
Sleeve Style: Full-Fashioned (SS1)
Combo: None
Armhole: Standard
Sleeve Shape: Tapered
Sleeve Length: Long



Top Style: Round Scallop Hem

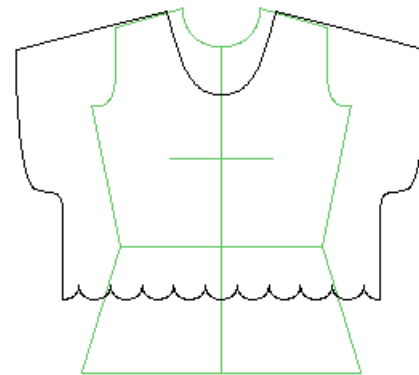
Medium = 10 scallops

Large = 6 scallops



Combination:

Category: Top
Top Group: Basic
Top Style: Round Scallop Hem
Shoulder: Sloped
Neck Group: Scoop
Neck Style: Wide
Darts: None
Sleeve Group: Cap (SS2)
Cap Style: Curve 1 (SS2)

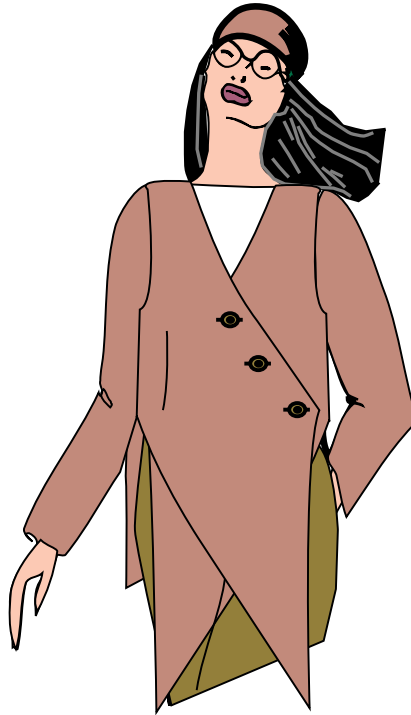
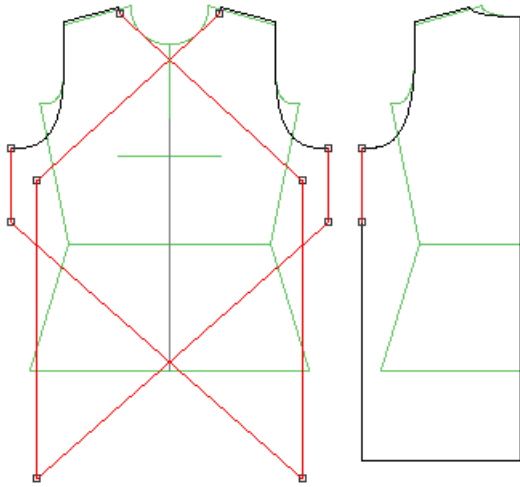


Comments:

- ◆ The scallops do not self-adjust as you move the side seam, however, you can tweak their widths manually. Knitters may have to 'fudge' the hip measurement in the Sloper to temporarily create perfect shaping without nudging points. (Do not save the edited sloper from the Sloper menu). There are 10 (Medium styles) or 6 (Large styles) scallops. Tweak the sloper until the garment with ease is easily divisible by these numbers.
- ◆ Knitters may also drag the lower scallop points down to possibly adjust the shaping instructions so that the increases occurring on the scallop work more to one's liking.
- ◆ This style does not work with all style options/combinations.
- ◆ The width of a scallop is not necessarily proportional to its width, although you may adjust the points if this is a priority.
- ◆ If combined with a scalloped sleeve style, the sleeve will take its scallop width from the bodice.
- ◆ If combined with Asymmetrical necklines, the scallops do not continue beyond center front.
- ◆ Scallop styles do not work with Raglan or Saddle Shoulder styles.

Category: Top Top Group: Body-Neck Combo

Body-Neck Combo Style: Criss-Cross Wrap 1



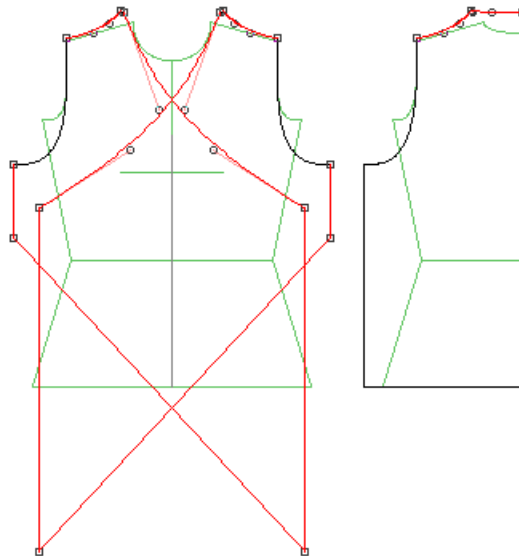
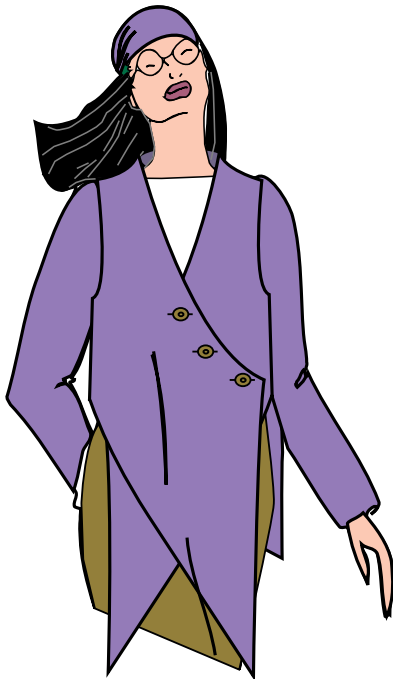
Combination:

Category: Top
Top Group: Basic
Top Style: Average
Shoulder: Sloped
Neck Group: Asymmetrical
Neck Style: Criss-Cross Wrap 1
Darts: None
Sleeve Group: Separate
Sleeve Style: Set-In
Combo: None
Armhole: Standard
Sleeve Shape: Tapered
Sleeve Length: Long

Comments:

- ◆ This style is part of a new top category which combines the top, neck and shoulder style.
- ◆ The neckline of this style is a straight 'v'.
- ◆ If you change the garment length of this style, you will need to adjust a point on the front hemline to recreate the straight line unless you want to move this point for design reasons.

Body-Neck Combo Style: Criss-Cross Wrap 2

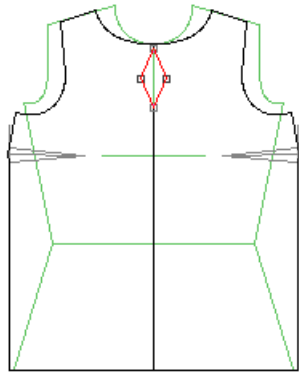
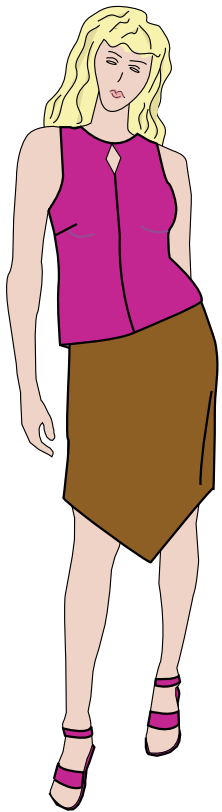


Comments:

- ◆ This style is part of a new top category which combines the top, neck and shoulder style.
- ◆ The neckline of this style is a curved V and the shoulder/neck area raises to form a stand-up collar style.
- ◆ If you change the garment length of this style, you will need to adjust a point on the front hemline to recreate the straight line unless you want to move this point for design reasons.

Necklines: Round

Neck Group: Round
Neck Style: Keyhole1

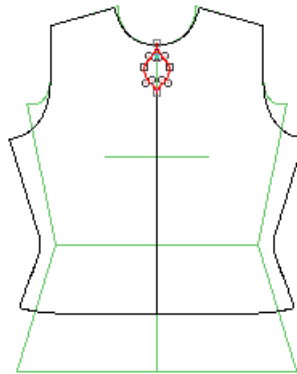


Combination:
Category: Top
Top Group: Basic
Top Style: Camisole (SS1)
Shoulder: Sloped
Neck Group: Round
Neck Style: Keyhole 1
Darts: Side Trued
Sleeve Group: Sleeveless
Armhole: Standard

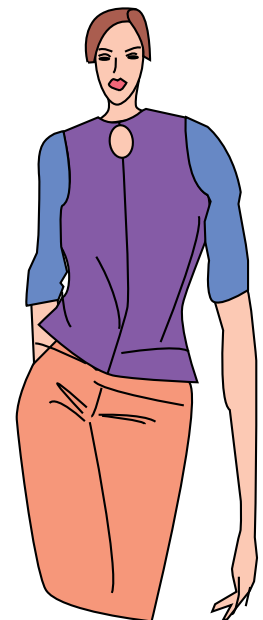
Comments:

- ◆ This style does not display in joined mode. You can still cut on the fold and use a rectangle to face the opening.
- ◆ Knitters may begin their separate neck side shaping at the beginning of the keyhole.
- ◆ The skirt illustrated here is easily created by moving the lower point of the center front pattern down.

Neck Group: Round
Neck Style: Keyhole2



Combination:
Category: Top
Top Group: Contoured
Top Style: Peplum (SS1)
Shoulder: Sloped
Neck Group: Round
Neck Style: Keyhole 2
Darts: None
Sleeve Group: Separate
Sleeve Style: Standard
Combo: None
Armhole: Standard
Sleeve Shape: Tapered
Sleeve Length: Medium



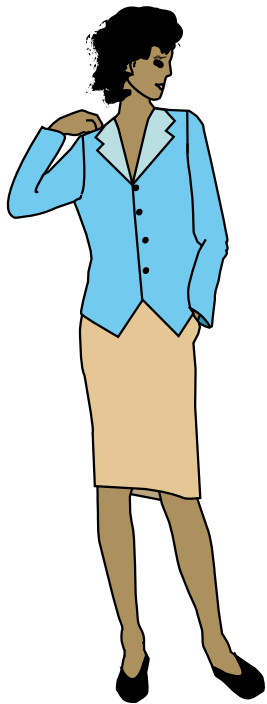
Comments:

- ◆ See comments for Keyhole1.

Necklines: Collar-Style

Neck Group: Collar-Style

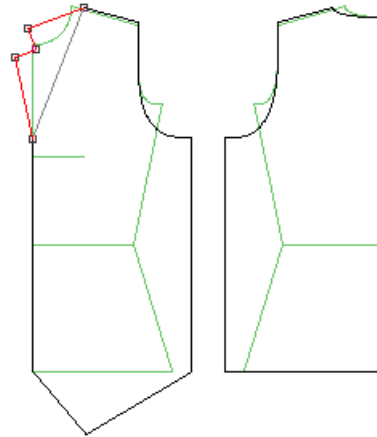
Neck Style: Foldback Notched 1



Combination:

Category: Top
Top Group: Vest
Top Style: Tip 2 Long
Shoulder: Sloped
Neck Group: Collar-Style
Neck Style: Foldback Notched 1
Darts: None
Sleeve Group: Separate
Sleeve Style: Square
Combo: None
Armhole: Standard
Sleeve Shape: Tapered
Sleeve Length: Long

Note: Join mode is not available with all Collar-Style styles.

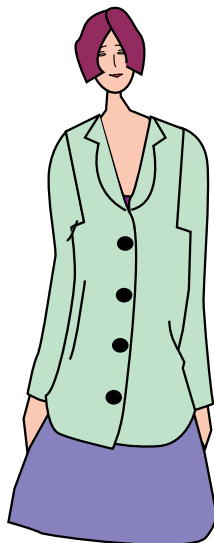


Comments:

- ◆ This collar folds back along the grey line.
- ◆ The collar is on the front piece only.
- ◆ Sleeves have been added to this style.
This is possible with all the vest styles and can be achieved by simply turning on the display of sleeves (from the Display menu) and selecting a sleeve group style.

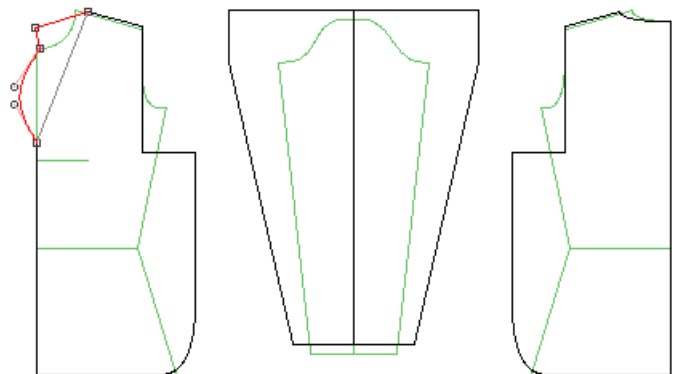
Neck Group: Collar-Style

Neck Style: Foldback Notched 2



Comments:

- ◆ This collar folds back along the grey line.
- ◆ The collar is on the front piece only.



Combination:

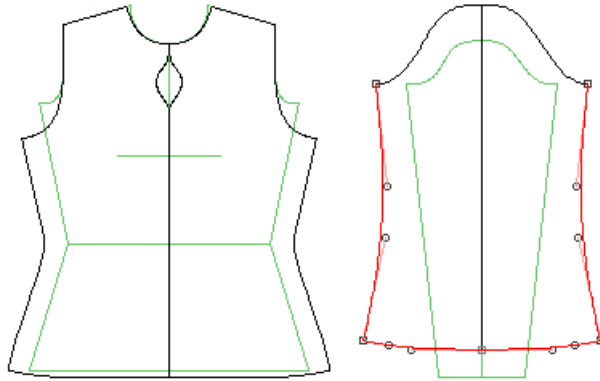
Category: Top
Top Group: Basic
Top Style: Shirtwaist (SS1)
Shoulder: Sloped
Neck Group: Collar-Style
Neck Style: Foldback Notched 2
Darts: None
Sleeve Group: Separate
Sleeve Style: Square
Combo: None
Armhole: Standard
Sleeve Shape: Tapered
Sleeve Length: Long

Sleeve Group: Separate Sleeve Shape

Sleeve Group: Separate
Sleeve Style: Bell

Combination:

Category: Top
Top Group: Contoured
Top Style: Fitted
Shoulder: Sloped
Neck Group: Round
Neck Style: Keyhole 2 (SS2)
Darts: None
Sleeve Group: Separate
Sleeve Style: Set-In Standard
Combo: None
Armhole: Standard
Sleeve Shape: Bell
Sleeve Length: Long



Comments:

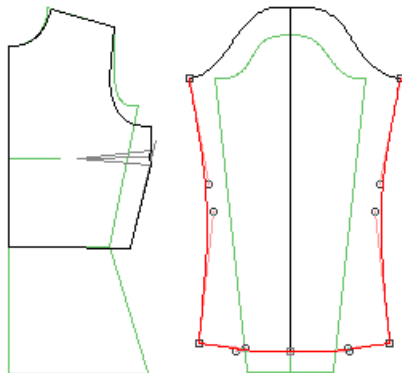
- ◆ The amount of bell curve may be adjusted using the curve control points.
- ◆ You may control the height of the narrowest point of the sleeve by adjusting the length of the curve control arms.



Sleeve Group: Separate
Sleeve Shape: Bell Slim

Combination:

Category: Top
Top Group: Contoured
Top Style: Waist-Length Fitted (SS2)
Shoulder: Sloped
Neck Group: Round
Neck Style: Standard
Darts: None
Sleeve Group: Separate
Sleeve Style: Set-In Standard
Combo: None
Armhole: Standard
Sleeve Shape: Bell Slim
Sleeve Length: Long



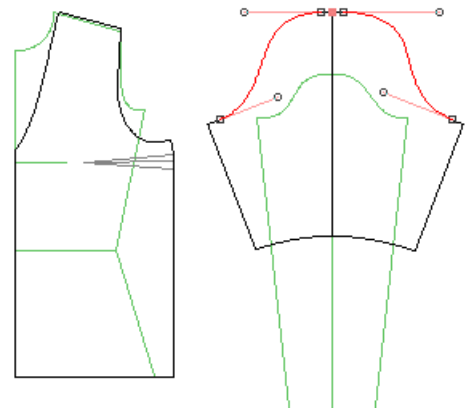
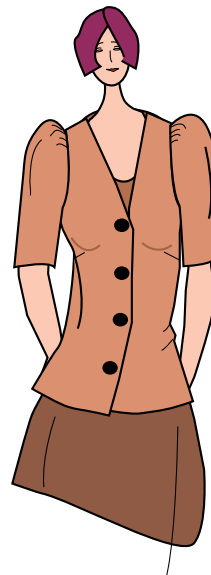
Comments:

- ◆ See above bell sleeve comments

Sleeve Group: Separate
Sleeve Style: Puffed

Combination:

Category: Top
Top Group: Basic
Top Style: Fitted
Shoulder: Sloped
Neck Group: V
Neck Style: Medium Curved
Darts: Side Trued
Sleeve Group: Separate
Sleeve Style: Set-In Standard
Combo: None
Armhole: Standard
Sleeve Shape: Puffed
Sleeve Length: Medium



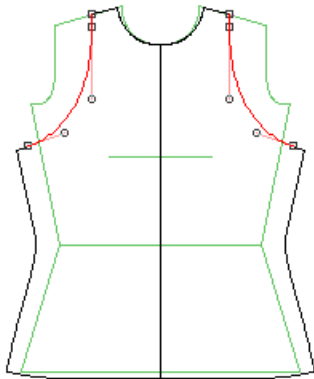
Comments:

- ◆ Use notches in Final Pattern mode to assist in setting the sleeve.

Sleeve Group: Sleeveless

Sleeve Group: Sleeveless

Armhole: Halter



Combination:

Category: Top

Top Group: Contoured

Top Style: Fitted

Shoulder: Sloped

Neck Group: Round

Neck Style: Standard

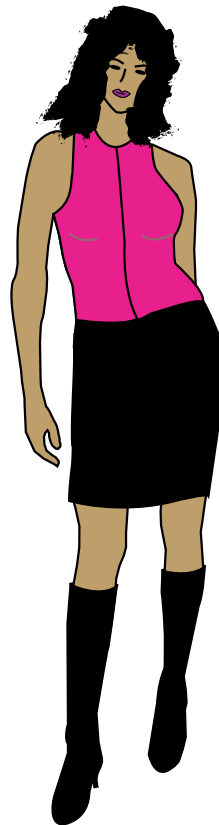
Darts: None

Sleeve Group: Sleeveless

Sleeve Style: Halter

Comments:

- ◆ A side bust dart may be helpful with this style to allow for a snugger fit around the armhole.



Skirt Subcategory, Skirt Group: Flared

Skirt Group: Flared

Skirt Style: Standard

Combination:

Category: Bottom

Subcategory: Skirt

Skirt Group: Flared

Skirt Style: Standard

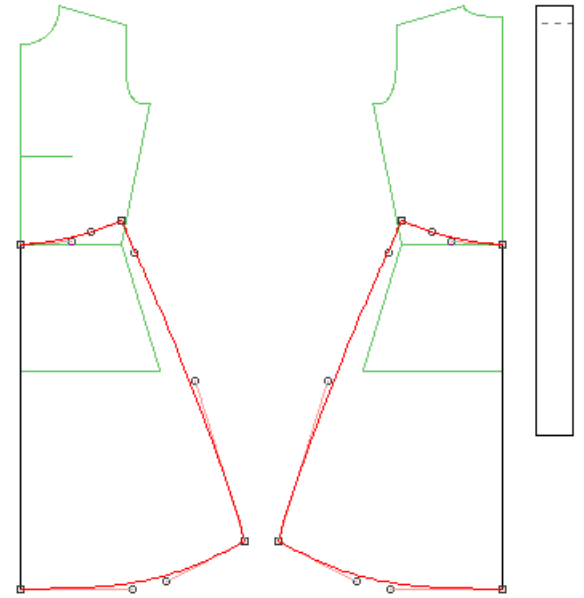
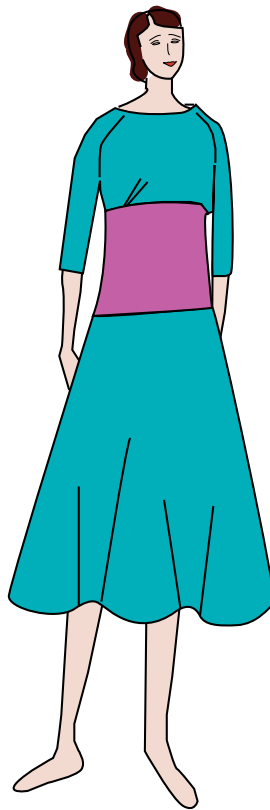
Waist Treatment: Waistband Template

Waistband: Front Closure Women

Waist Darts: Double Trued

Comments:

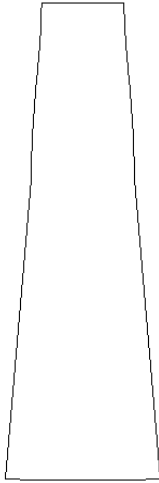
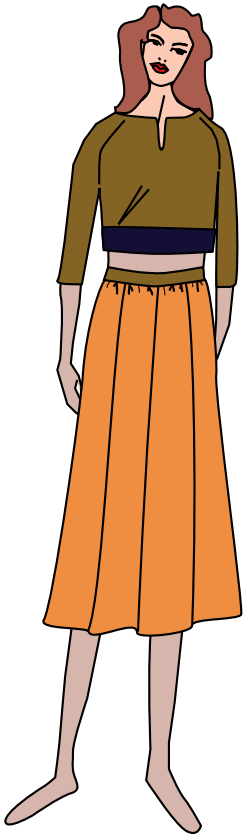
- ◆ Due to the waist measurement and curve of the waistline, this style requires a waistband. It will not work with elastic/casing finishes even though the program will allow you to choose the option.



Skirt Subcategory, Skirt Group: 8-Gore, cont'd

Skirt Group: 8-Gore

Skirt Style: Gather-Waist Flared 1



Combination:

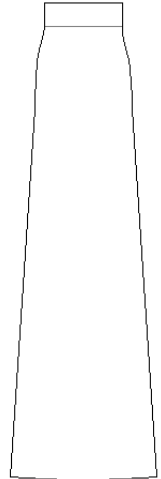
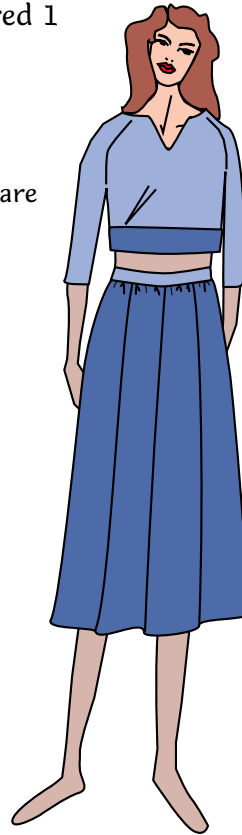
Category: Bottom
Subcategory: Skirt
Skirt Group: Eight-gore
Skirt Style: Gather-Waist Flared 1
Waist Treatment: Elastic

Comments:

- ◆ Gathered at the waist with flare beginning at the hipline.

Skirt Group: 8-Gore

Skirt Style: Gather-Waist Flared 2



Combination:

Category: Bottom
Subcategory: Skirt
Skirt Group: Eight-gore
Skirt Style: Gather-Waist Flared 2
Waist Treatment: Elastic with Casing

Comments:

- ◆ Gathered at the waist with flare beginning slightly above the hip.

Skirt Group: 8-Gore

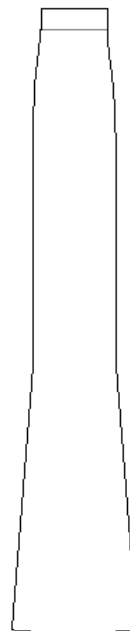
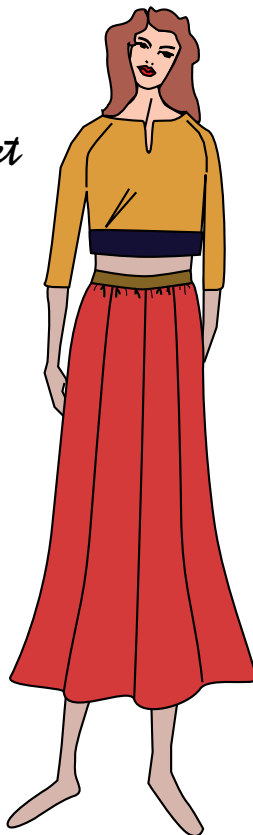
Skirt Style: Gather-Waist Trumpet

Combination:

Category: Bottom
Subcategory: Skirt
Skirt Group: Eight-gore
Skirt Style: Gather-Waist Trumpet
Waist Treatment: Elastic with Casing

Comments:

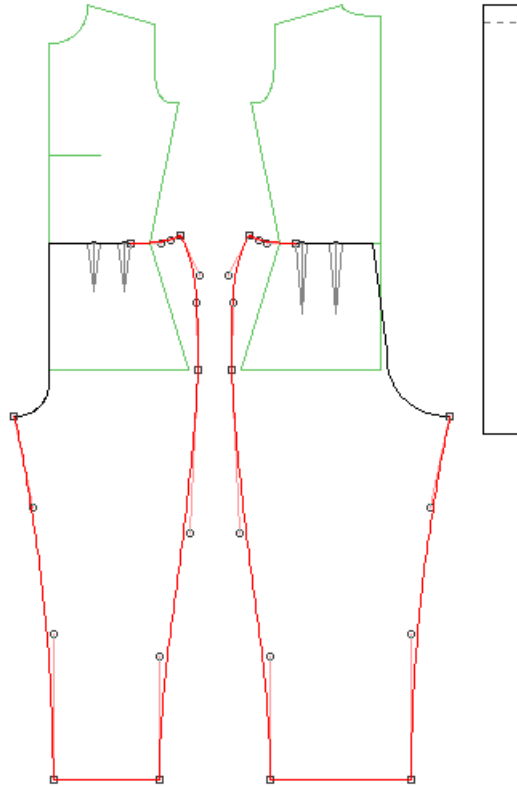
- ◆ The skirt fits slim to approximately the knee level and then flares.
- ◆ Adjust the flare as desired to achieve varying levels of 'petal' effect.
- ◆ This style is longer than the other gore skirt styles.



Pant Subcategory, Pant Group: Generic Template

Pants Group: Generic Template

Pants Style: Curved Seams



Combination:

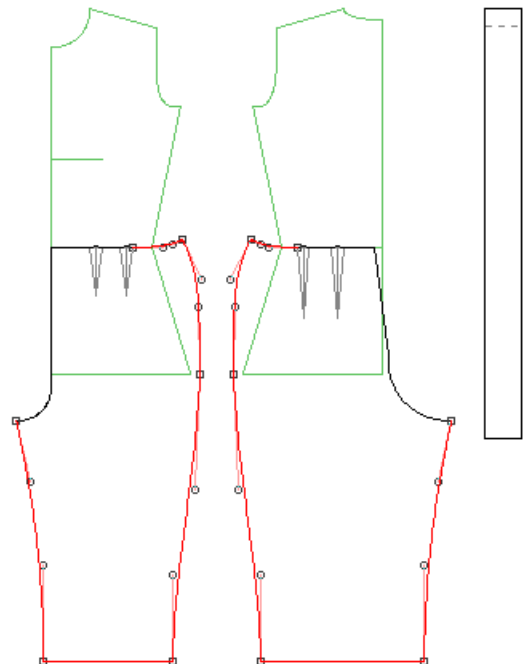
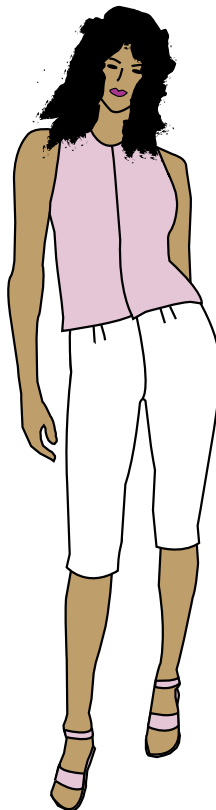
Category: Bottom
Subcategory: Pants
Pants Group: Generic Template
Pants Style: Curved Seams
Waist Treatment: Waistband Template
Waistband: Front Closure Women
Waist Darts: Double Trued

Comments:

- ◆ Use this style to achieve greater contour fit in pants.
- ◆ This style is good for people who have 'other than average' calves or thighs and need to adjust the curves accordingly.
- ◆ More curve has been added to the outer waist area.

Pants Group: Generic Template

Pants Style: Capri



Combination:

Category: Bottom
Subcategory: Pants
Pants Group: Generic Template
Pants Style: Capri
Waist Treatment: Waistband Template
Waistband: Front Closure Women
Waist Darts: Double Trued

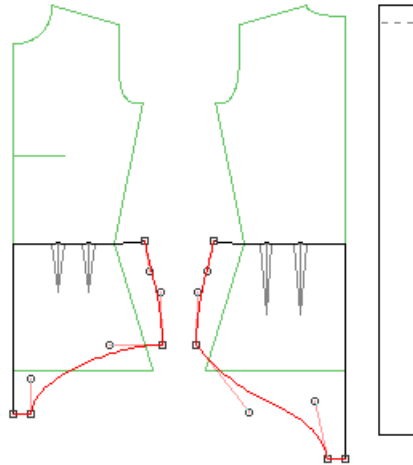
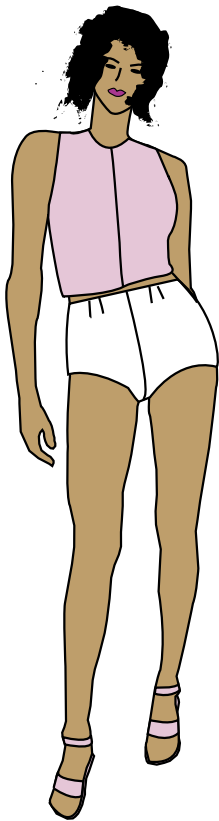
Comments:

- ◆ Check your desired fit at the knee by measuring around your knee with a tape. Compare this to the pattern and adjust as necessary.
- ◆ See Curved Seams style for additional comments.

Pant Subcategory, Pant Group: Generic Template

Pants Group: Generic Template

Pants Style: Underwear 1



Combination:

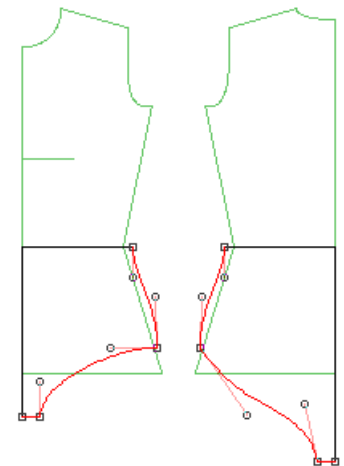
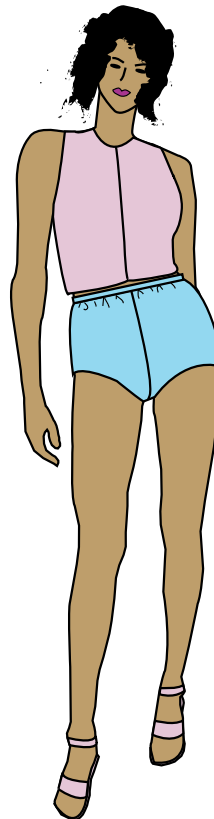
Category: Bottom
Subcategory: Pants
Pants Group: Generic Template
Pants Style: Underwear 1
Waist Treatment: Waistband Template
Waistband: Back Closure
Waist Darts: Double Trued

Comments:

- ◆ This style is cut fuller at the waist, requiring darts or more gathering.
- ◆ Use either of the underwear styles to create body suits (use Top Plus Bottom mode).
- ◆ This style uses your hip depth to determine the depth of the underwear. If you have used a shorter than average hip depth (due to a tummy or other body shape situation, you may need to alter the depth/length of the garment. Use your crotch length measurement as a guide.
- ◆ You may use either style for men's undergarments. Simply widen the crotch.

Pants Group: Generic Template

Pants Style: Underwear 2



Comments:

- ◆ This style is cut slimmer at the waist, requiring easing.
- ◆ If you plan to use elastic, ensure that the waist will go over the hip or change to Underwear 1 style.
- ◆ This style uses your hip depth to determine the depth of the underwear. If you have used a shorter than average hip depth (due to a tummy or other body shape situation, you may need to alter the depth/length of the garment. Use your crotch length measurement as a guide.

Combination:

Category: Bottom
Subcategory: Pants
Pants Group: Generic Template
Pants Style: Underwear 2
Waist Treatment: Elastic