

Style Set 1 Illustration Sheet for Garment Designer

Welcome to Style Set 1

This set provides you with 45+ additional style elements that will work and match with the original Garment Designer and other Style Set files.

Key to Style Information/Illustrations

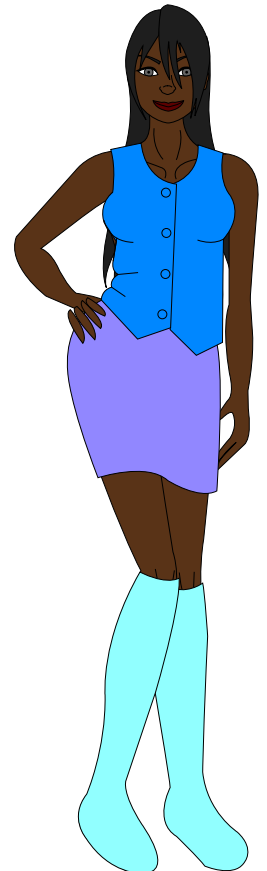
Red Lines/Curves: Show you new points involved in the style, plus the segments (either straight or curved) that exist with the style. Use this information to assist you in choosing styles for custom design ideas.

Black/Red Lines: Show you the pattern built through the combination of style menus.

Combination: The style menu options chosen for the style shown. Use these as inspiration.

Illustration: Drawn illustration of the garment for inspiration.

Comments: Helpful information about the style.



Thanks to Taylor Caldwell, Mesa College, San Diego student who assisted with the Illustrations as part of her Work Experience program.
Thanks also to Sonia Barton for overseeing the Style Set 1 Help Sheet project.

Style Set 1

©1998 - 2013, All Rights Reserved
Susan Lazear, Cochenille Design Studio
Encinitas, CA 92023-5604
www.cochenille.com info@cochenille.com



Installation:

Double-click on the Style Set 1 installer file found on the CD you have received with this package. Follow the prompts. Various files will be updated in your Garment Designer folder.

Note:

1. If you purchased the Style Set 1 at the same time as your Garment Designer, it might have been included on your Garment Designer CD for easier installation. It will install when you install your Garment Designer.
2. It is highly recommended that you only have one copy of Garment Designer on your computer. This will avoid confusing the Installer.
3. With the millions of combinations of styles now available in Garment Designer (with Style set 1 & 2), it is likely that there is a style combination that simply cannot work, or doesn't work properly. This booklet should alert you to known impossibilities. Please contact Cochenille if you have any problems or questions.

Contact: techsupport@cochenille.com if you have any questions.



Category: Top

Top Group: Basic

Bolero Angle

Combination:

Category: Top

Top Group: Basic

Top Style: Bolero Angle

Shoulder: Sloped

Neck Group: Round

Neck Style: Standard

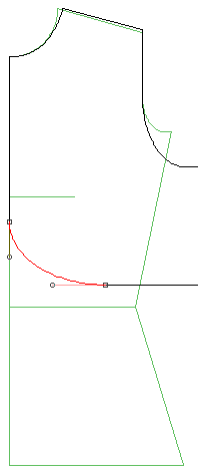
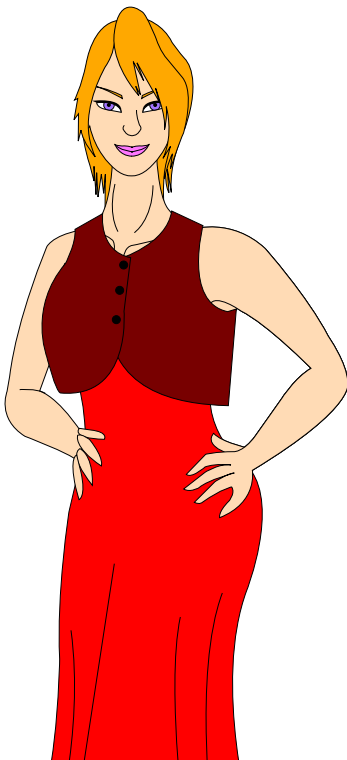
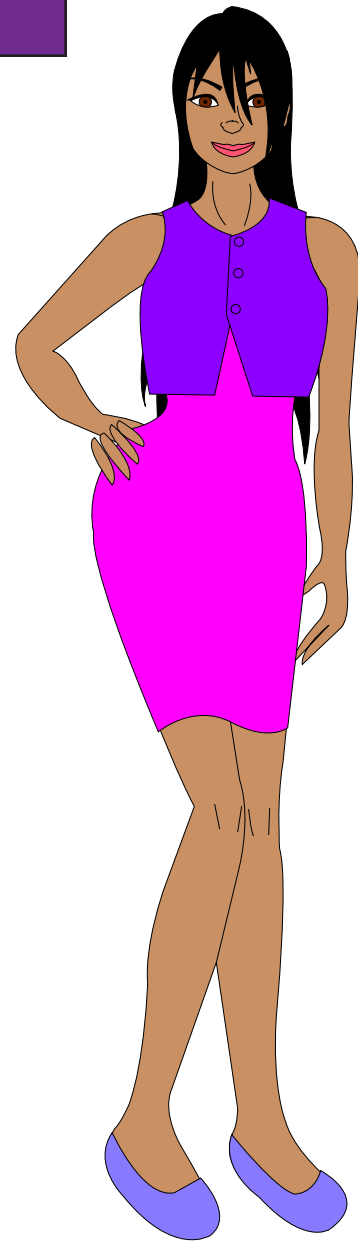
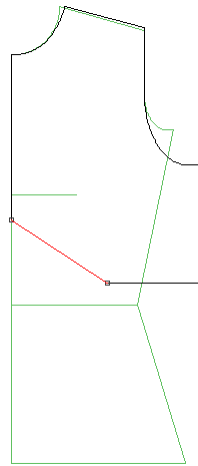
Darts: None

Sleeve Group: Sleeveless

Armhole: Standard

Comments:

- Garment Length is measured to the lower side seam points.
- Most of the Asymmetrical neck styles will extend straight from the CF line (as opposed to continuing on the angle).



Bolero Curve

Combination:

Category: Top

Top Group: Basic

Top Style: Bolero Angle

Shoulder: Sloped

Neck Group: Round

Neck Style: Standard

Darts: None

Sleeve Group: Sleeveless

Armhole: Standard

Comments:

- Garment Length is measured to the lower side seam points.
- Most of the Asymmetrical neck styles will extend straight from the CF line (as opposed to continuing on the angle).

Category: Top

Top Group: Basic

Camisole

Combination:

Category: Top

Top Group: Basic

Top Style: Camisole

Shoulder: Sloped

Neck Group: Round

Neck Style: Standard

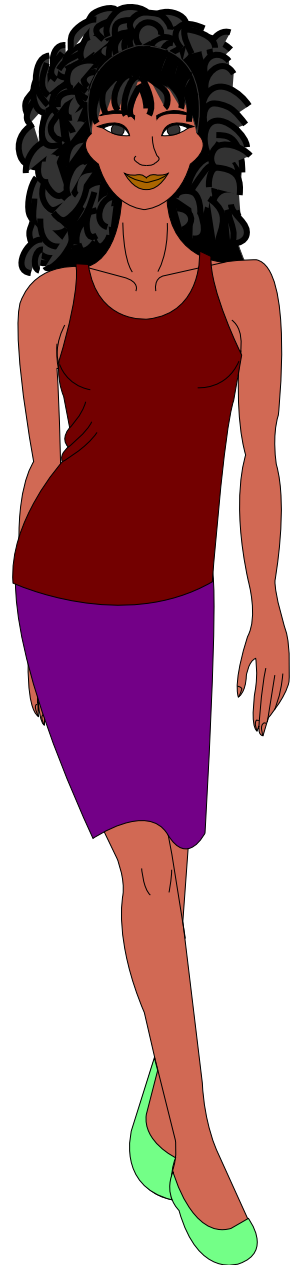
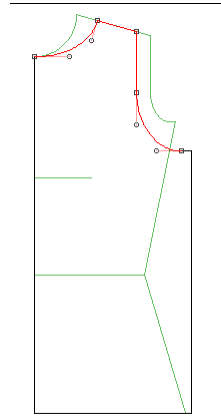
Darts: None

Sleeve Group: Sleeveless

Armhole: Standard

Comments:

- Garment Length is measured from high shoulder to hem



Shirttail

Combination:

Category: Top

Top Group: Basic

Top Style: Shirttail

Shoulder: Sloped

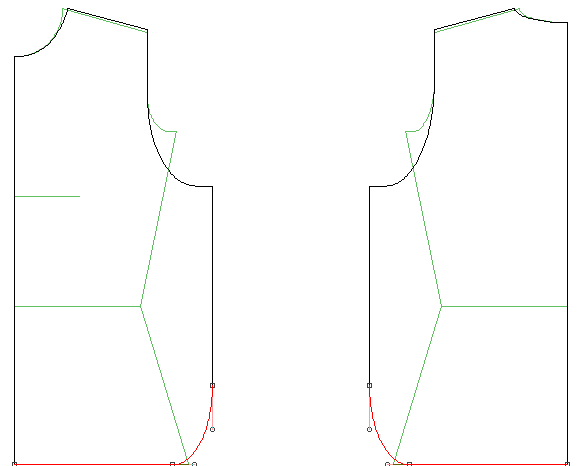
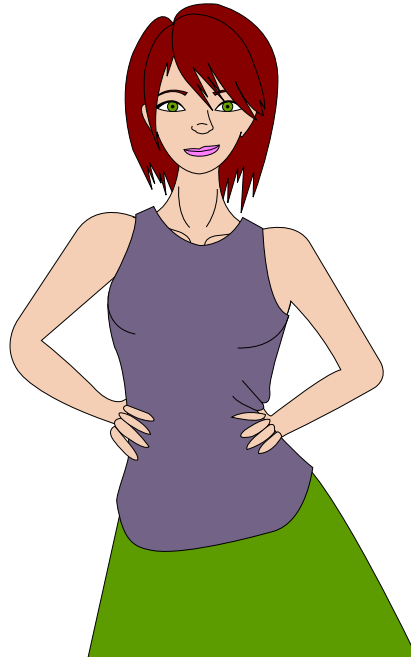
Neck Group: Round

Neck Style: Standard

Darts: None

Sleeve Group: Sleeveless

Armhole: Standard



Comments:

- Garment Length is measured to the lower front hem.

Category: Top

Top Group: Basic

Square Tail

Combination:

Category: Top

Top Group: Basic

Top Style: Square Tail

Shoulder: Sloped

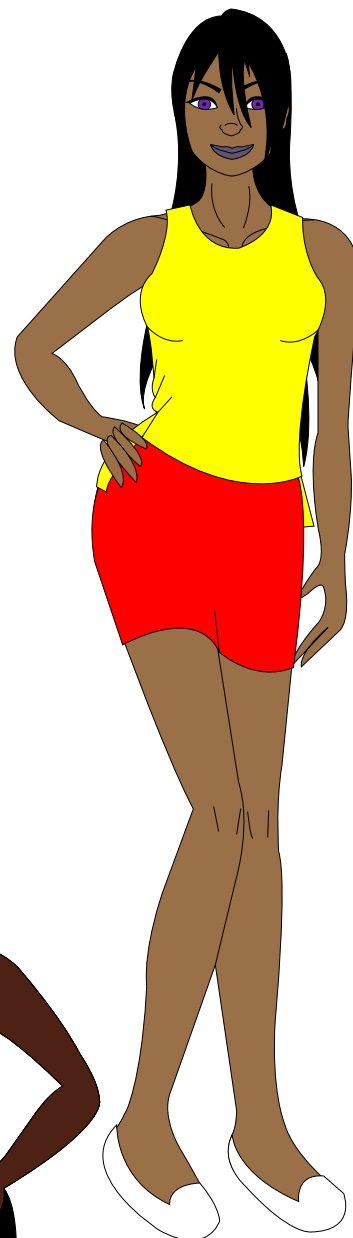
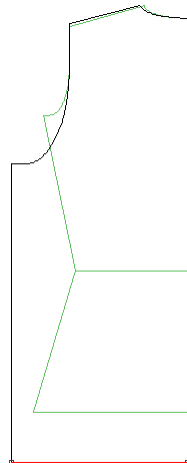
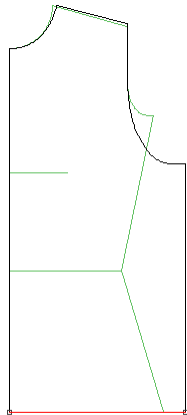
Neck Group: Round

Neck Style: Standard

Darts: None

Sleeve Group: Sleeveless

Armhole: Standard



Comments:

- Garment Length is measured to the lower front center.

Angle Up Top

Combination:

Category: Top

Top Group: Basic

Top Style: Top Angle Up

Shoulder: Sloped

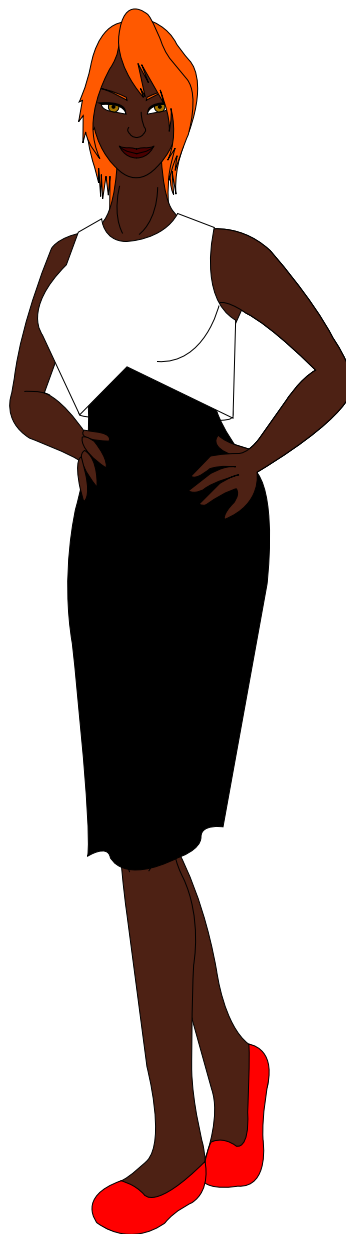
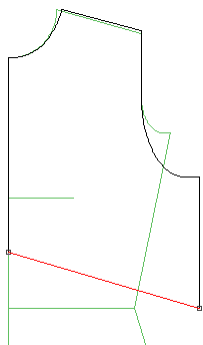
Neck Group: Round

Neck Style: Standard

Darts: None

Sleeve Group: Sleeveless

Armhole: Standard



Comments:

- Garment Length is measured to the lower side seam points.
- Most of the Asymmetrical neck styles will extend straight from the CF line (as opposed to continuing on the angle).

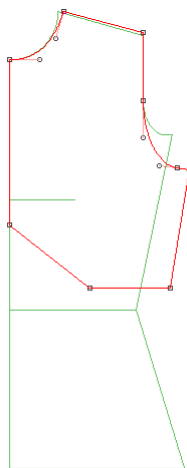
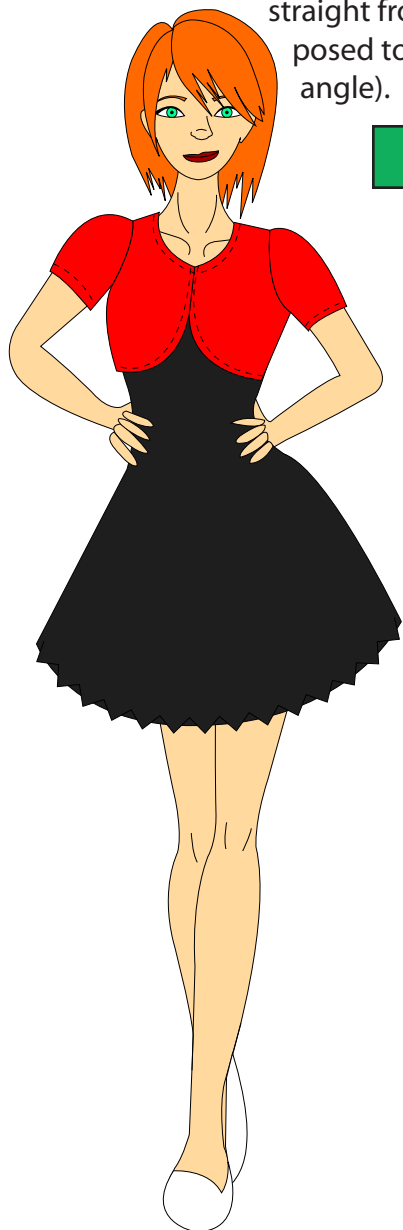
Contoured Bolero Angle

Combination:

Category: Top
Top Group: Contoured
Top Style: Bolero Angle
Shoulder: Sloped
Neck Group: V
Neck Style: High
Darts: None
Sleeve Group: Sleeveless
Armhole: Standard

Comments:

- Garment Length is measured to the lower side seam points.
- Most of the Asymmetrical neck styles will extend straight from the CF line (as opposed to continuing on the angle).



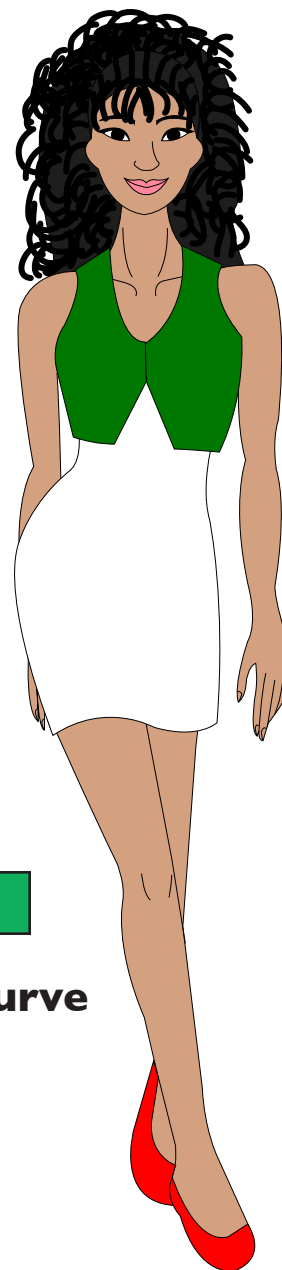
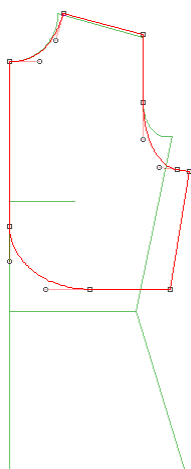
Contoured Bolero Curve

Combination:

Category: Top
Top Group: Contoured
Top Style: Bolero Curve
Shoulder: Sloped
Neck Group: Round
Neck Style: Standard
Darts: None
Sleeve Group: Separate
Sleeve Style: Set-In Standard
Combo: None
Armhole: Standard
Sleeve Shape: Tapered
Sleeve Length: Short

Comments:

- Garment Length is measured to the lower side seam points.
- Most of the Asymmetrical neck styles will extend straight from the CF line (as opposed to continuing on the angle).



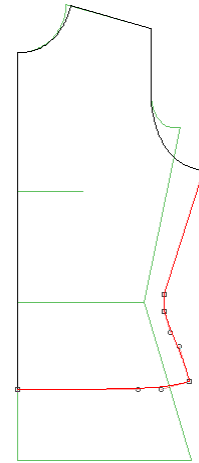
Category: Top

Top Group: Contoured

Contoured Peplum

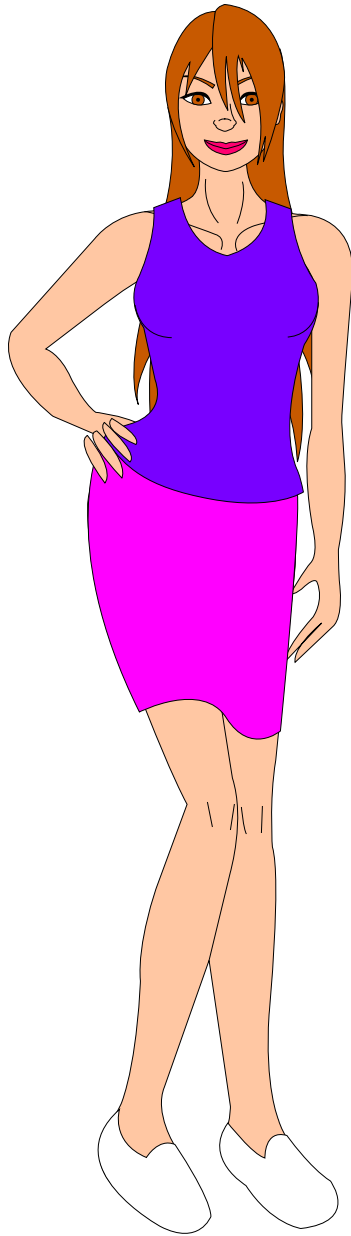
Combination:

Category: Top
Top Group: Contoured
Top Style: Peplum
Shoulder: Sloped
Neck Group: Round
Neck Style: Standard
Darts: None
Sleeve Group: Sleeveless
Armhole: Standard



Comments:

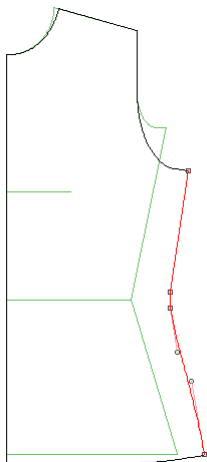
- Garment Length is measured to the lower center hem.



Contoured Semi-Fit

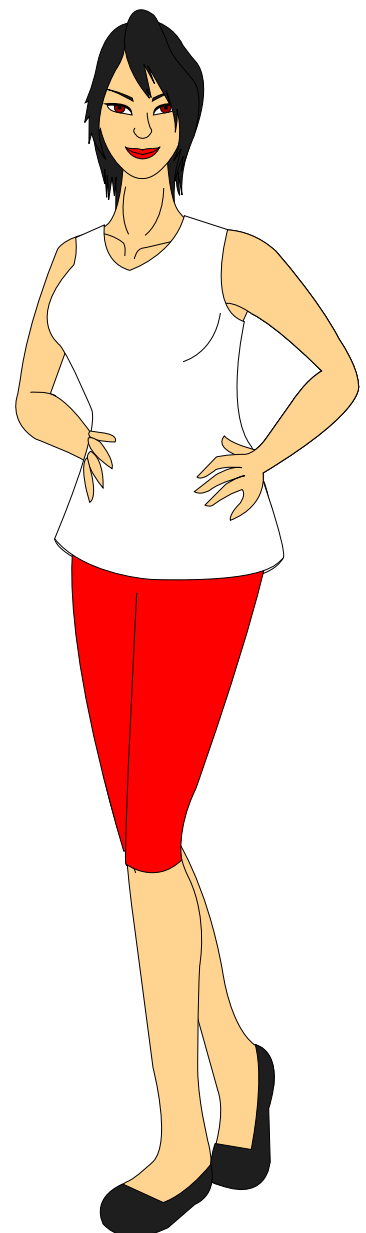
Combination:

Category: Top
Top Group: Contoured
Top Style: Semi-Fitted
Shoulder: Sloped
Neck Group: Round
Neck Style: Standard
Darts: None
Sleeve Group: Sleeveless
Armhole: Standard



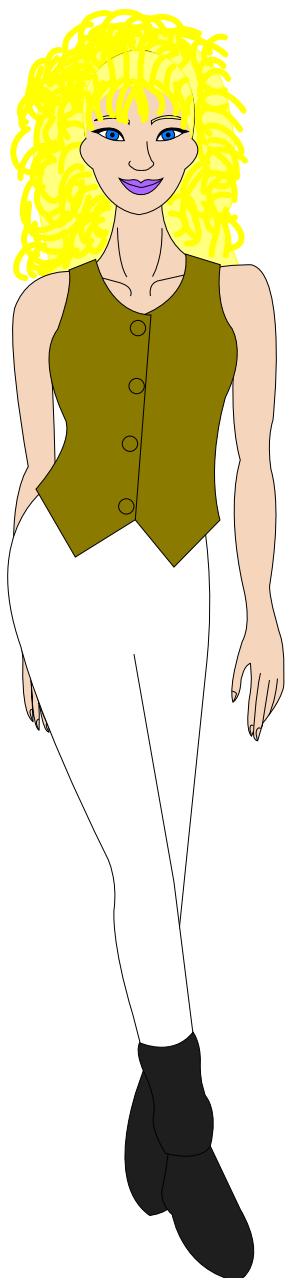
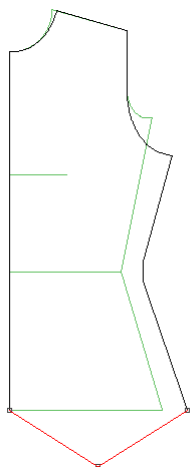
Comments:

- Garment Length is measured to the lower center hem.



Category: Top

Top Group: Contoured



Contoured Tip I

Combination:

Category: Top

Top Group: Contoured

Top Style: Tip 1V

Shoulder: Sloped

Neck Group: Round

Neck Style: Standard

Darts: None

Sleeve Group: Sleeveless

Armhole: Standard

Comments:

- Garment Length is measured to the center front point.
- Most of the Asymmetrical neck styles will extend straight from the CF line (as opposed to continuing on the angle).

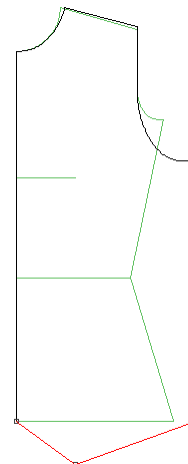
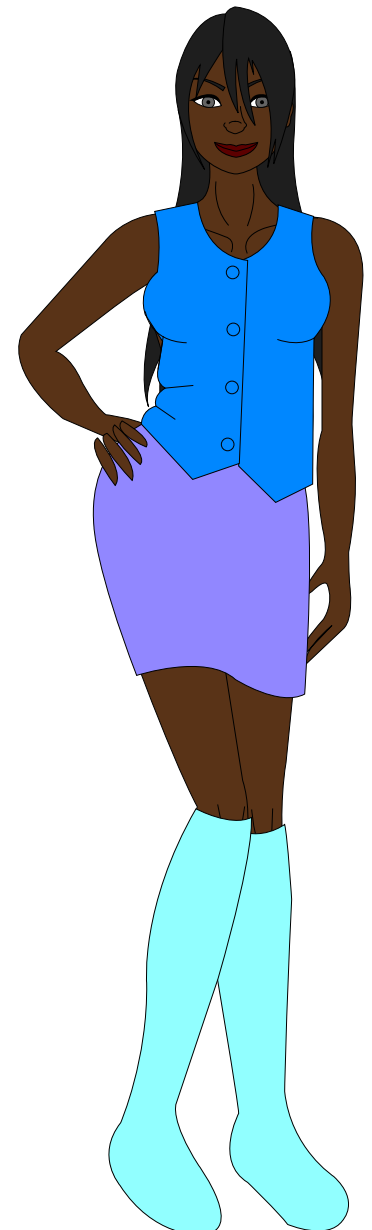
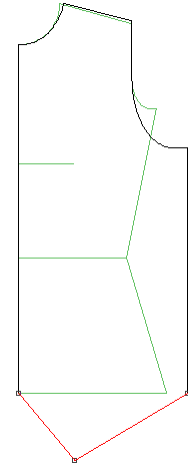
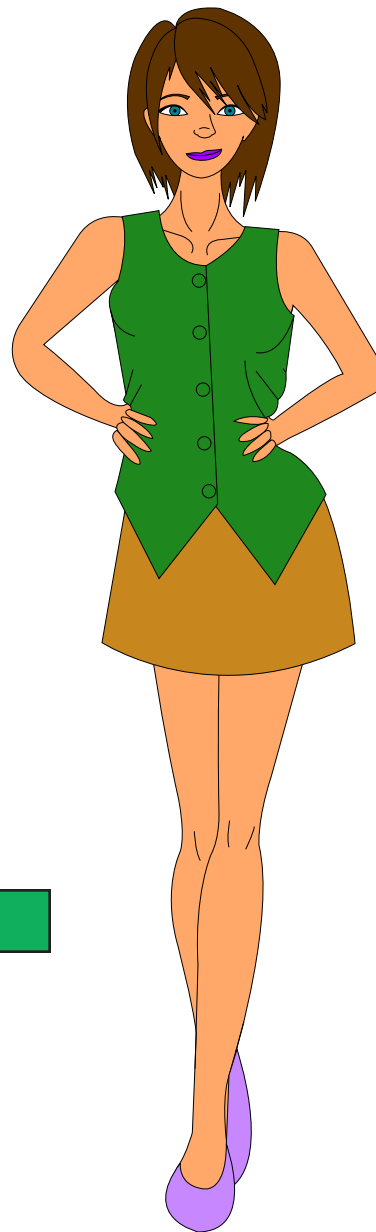
Vest Tip 2 Long

Combination:

Category: Top
Top Group: Vest
Top Style: Tip 2 Long
Shoulder: Sloped
Neck Group: Round
Neck Style: Standard
Darts: None
Sleeve Group: Sleeveless
Armhole: Standard

Comments:

- Garment Length is measured to the lower center front point.
- Most of the Asymmetrical neck styles will extend straight from the CF line (as opposed to continuing on the angle).



Vest Tip 2

Combination:

Category: Top
Top Group: Vest
Top Style: Tip 2
Shoulder: Sloped
Neck Group: Round
Neck Style: Standard
Darts: None
Sleeve Group: Sleeveless
Armhole: Standard

Comments:

- Garment Length is measured to the lower center front point.
- Most of the Asymmetrical neck styles will extend straight from the CF line (as opposed to continuing on the angle).

Category: Dress

Top Group: Contoured

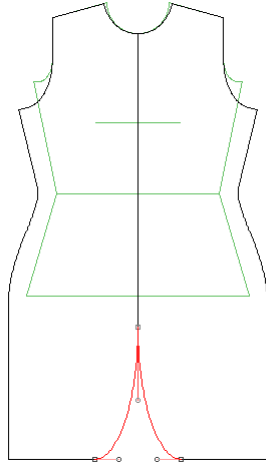
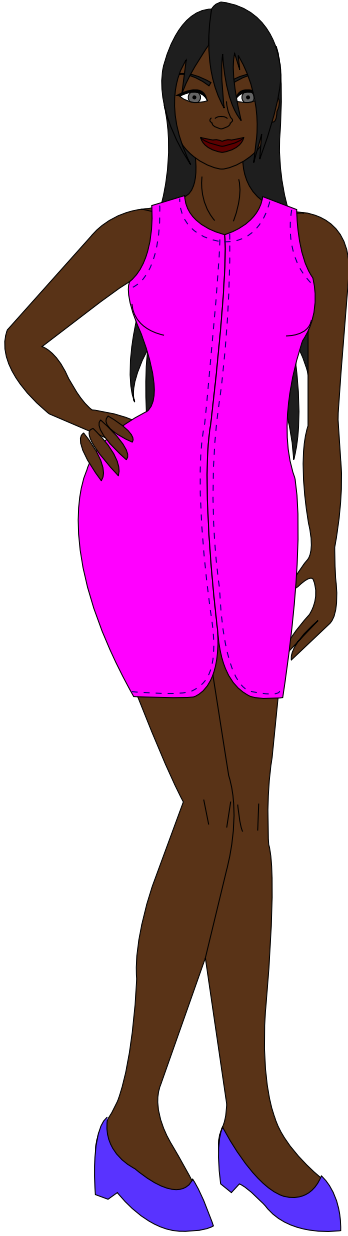
Contoured Center Round Hem

Combination:

Category: Dress
Dress Group: Contoured
Dress Style: Center Round Hem
Shoulder: Sloped
Neck Group: Round
Neck Style: Standard
Darts: None
Sleeve Group: Sleeveless
Armhole: Standard

Comments:

- Garment Length is measured to the lower side seam points.
- Most of the Asymmetrical neck styles will extend straight from the CF line (as opposed to continuing on the angle).



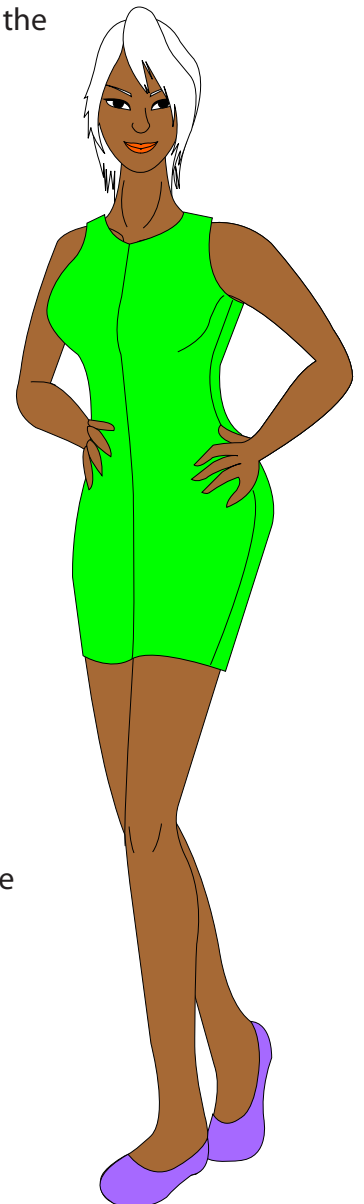
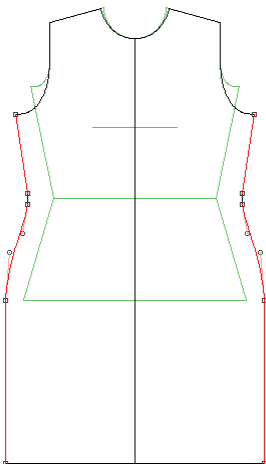
Contoured Semi-Fitted

Combination:

Category: Dress
Dress Group: Contoured
Dress Style: Semi-Fitted
Shoulder: Sloped
Neck Group: Round
Neck Style: Standard
Darts: None
Sleeve Group: Sleeveless
Armhole: Standard

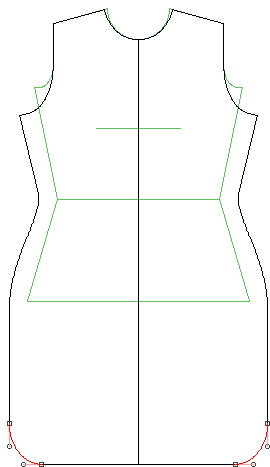
Comments:

- Garment Length is measured to the lower side seam points.



Category: Dress

Top Group: Contoured



Contoured Side Round Hem

Combination:

Category: Dress

Dress Group: Contoured

Dress Style: Side Round Hem

Shoulder: Sloped

Neck Group: Round

Neck Style: Standard

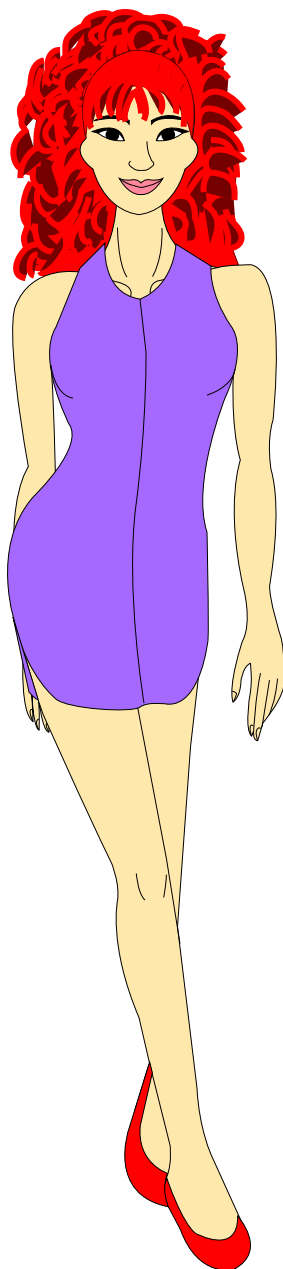
Darts: None

Sleeve Group: Sleeveless

Armhole: Standard

Comments:

- Garment Length is measured to the lower center front hem points.

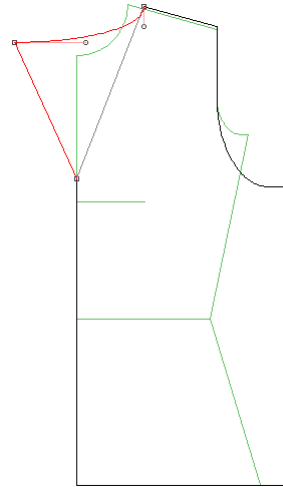


Necklines: Collar-Style

Foldback 1 Collar

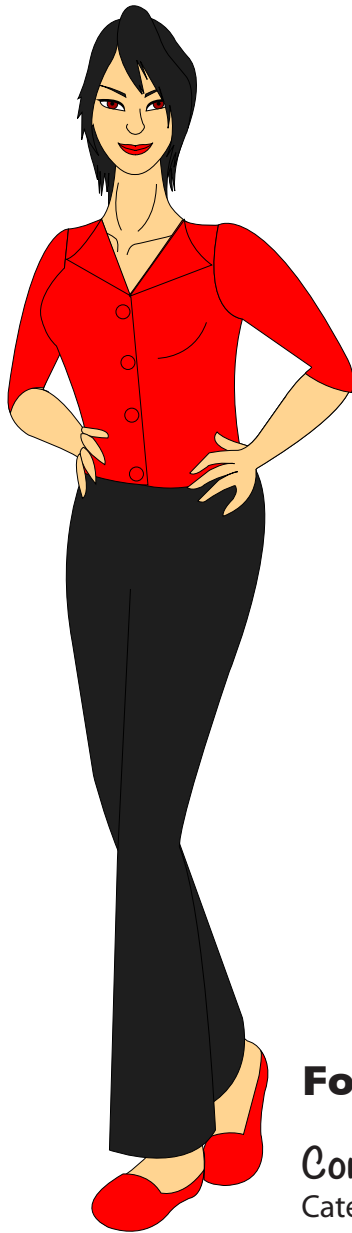
Combination:

Category: Top
Top Group: Basic
Top Style: Semi-Fitted
Shoulder: Sloped
Neck Group: Collar-Style
Collar Style: Foldback 1
Darts: None
Sleeve Group: Separate
Sleeve Style: Set-In Standard
Combo: None
Armhole: Standard
Sleeve Shape: Tapered
Sleeve Length: Medium



Comments:

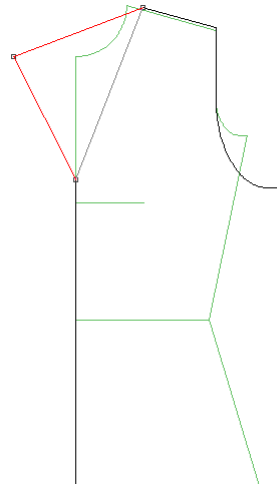
- This is the widest fold-back collar of the group.
- If you would like an asymmetrical neckline, you will need to create it manually using symmetry.



Foldback 2 Collar

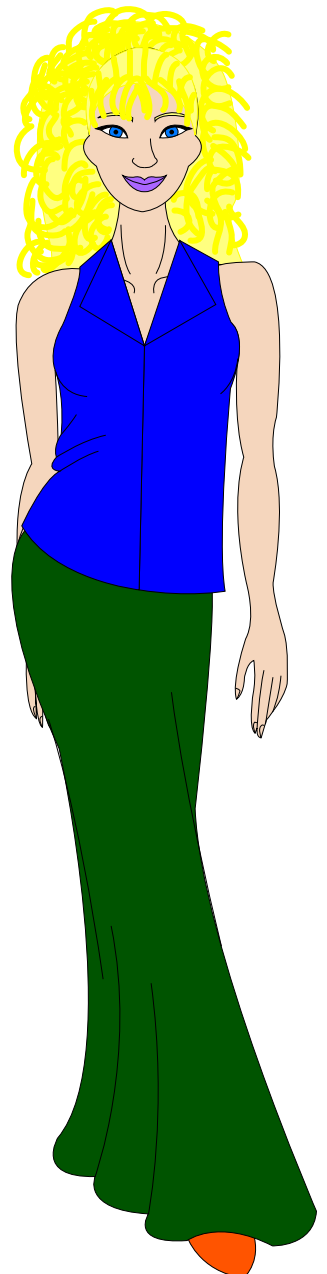
Combination:

Category: Top
Top Group: Basic
Top Style: Semi-Fitted
Shoulder: Sloped
Neck Group: Collar-Style
Collar Style: Foldback 2
Darts: None
Sleeve Group: Sleeveless
Armhole: Standard

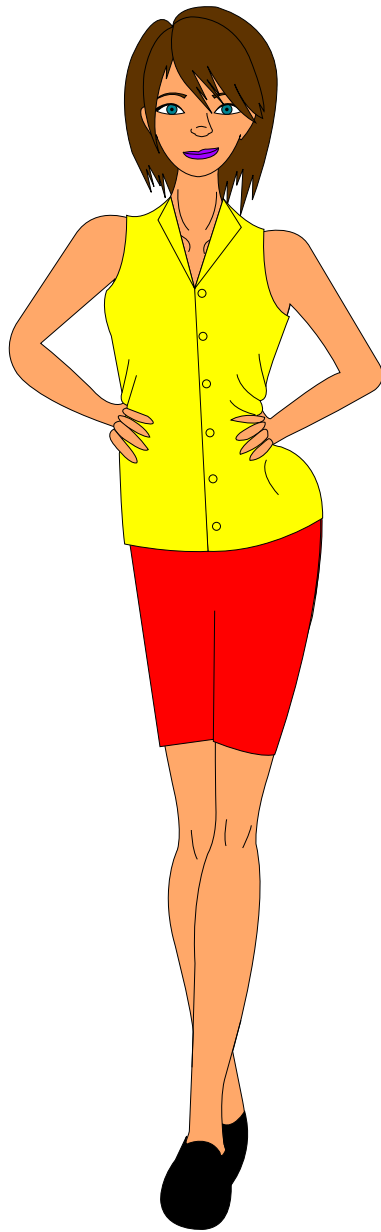
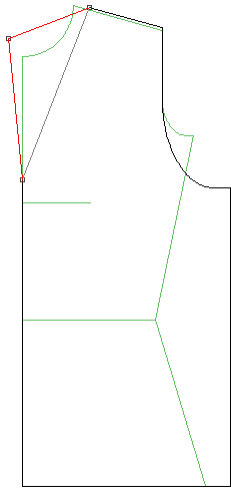


Comments:

- If you would like an asymmetrical neckline, you will need to create it manually using symmetry.



Necklines: Collar-Style



Foldback 3 Collar

Combination:

Category: Top

Top Group: Basic

Top Style: Semi-Fitted

Shoulder: Sloped

Neck Group: Collar-Style

Collar Style: Foldback 3

Darts: None

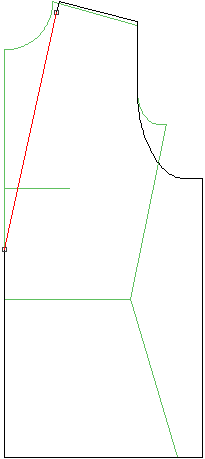
Sleeve Group: Sleeveless

Armhole: Standard

Comments:

- This is the narrowest of the fold-back collars in this set.
- If you would like an asymmetrical neckline, you will need to create it manually using symmetry.

Necklines:V



Very Low V

Combination:

Category: Top

Top Group: Basic

Top Style: Semi-Fitted

Shoulder: Sloped

Neck Group: V

Neck Style: Very Low

Darts: None

Sleeve Group: Sleeveless

Armhole: Standard

Comments:

- This style might need a modesty piece or should be worn over another garment.

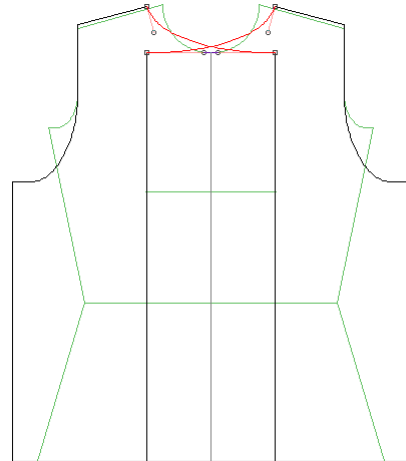
Necklines: Asymmetrical



Straight Asymmetrical

Combination:

Category: Top
Top Group: Basic
Top Style: Semi-Fitted
Shoulder: Sloped
Neck Group: Asymmetrical
Neck Style: Straight
Darts: None
Sleeve Group: Sleeveless
Armhole: Standard



Comments:

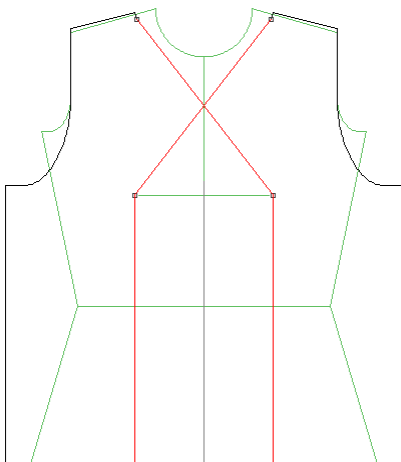
- This neckline is quite high and straight across the chest.



V Assymetrical

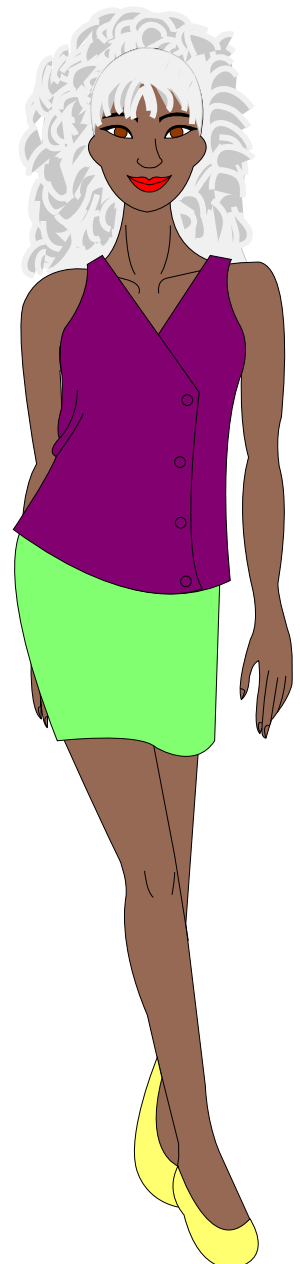
Combination:

Category: Top
Top Group: Basic
Top Style: Semi-Fitted
Shoulder: Sloped
Neck Group: Asymmetrical
Neck Style: V
Darts: None
Sleeve Group: Sleeveless
Armhole: Standard

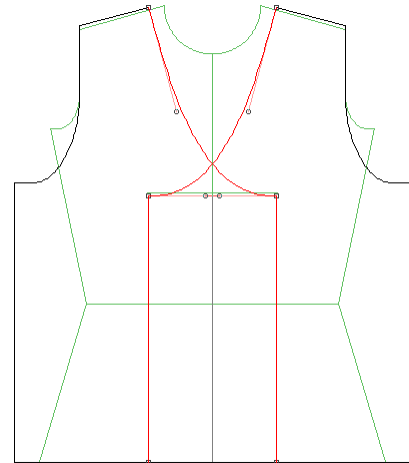
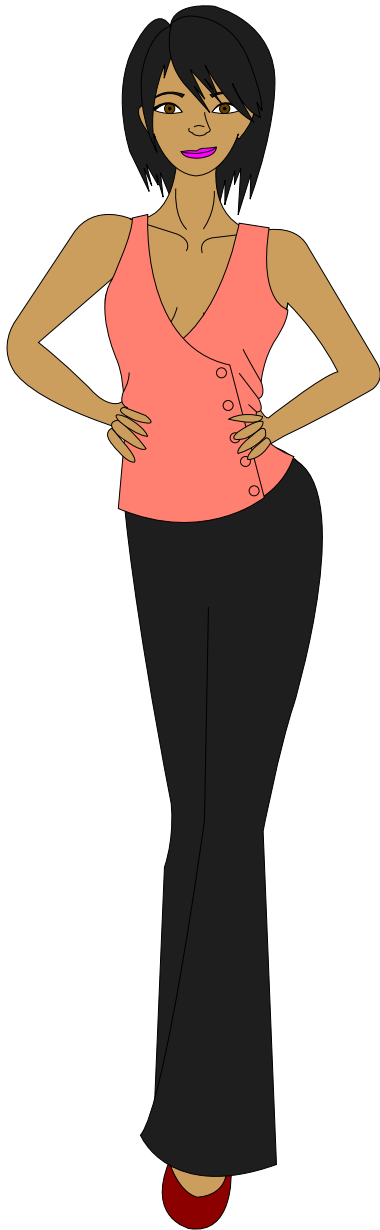


Comments:

- Most of the Asymmetrical neck styles will extend straight from the CF line (as opposed to continuing on the angle).



Necklines: Asymmetrical



V Curve Assymetrical

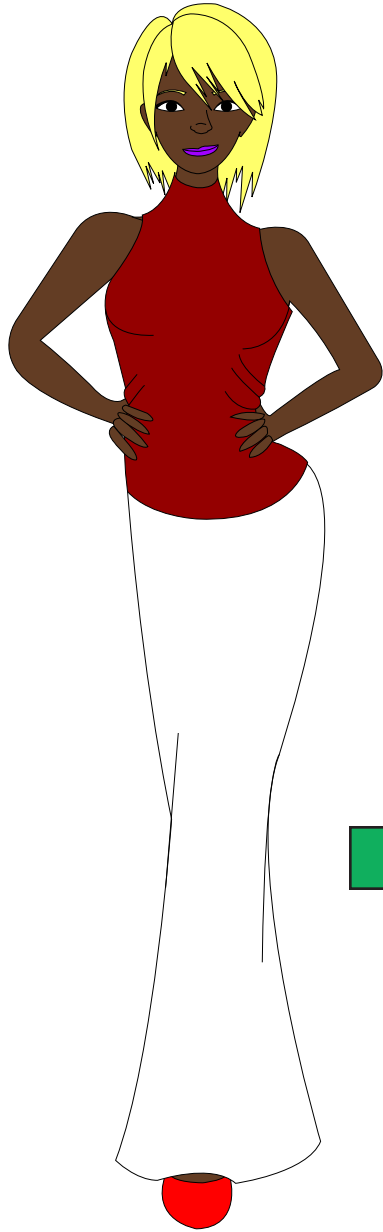
Combination:

Category: Top
Top Group: Basic
Top Style: Semi-Fitted
Shoulder: Sloped
Neck Group: Asymmetrical
Neck Style: V Curve
Darts: None
Sleeve Group: Sleeveless
Armhole: Standard

Comments:

- Most of the Asymmetrical neck styles will extend straight from the CF line (as opposed to continuing on the angle).

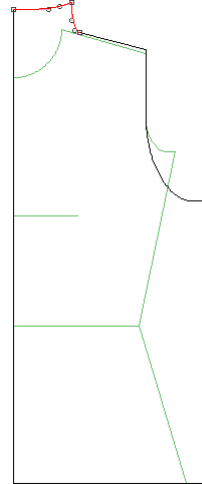
Necklines: Specialty



Narrow Funnel

Combination:

Category: Top
Top Group: Basic
Top Style: Semi-Fitted
Shoulder: Sloped
Neck Group: Specialty
Neck Style: Narrow Funnel
Darts: None
Sleeve Group: Sleeveless
Armhole: Standard



Comments:

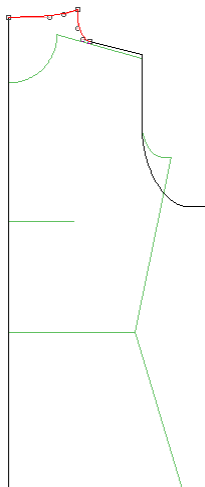
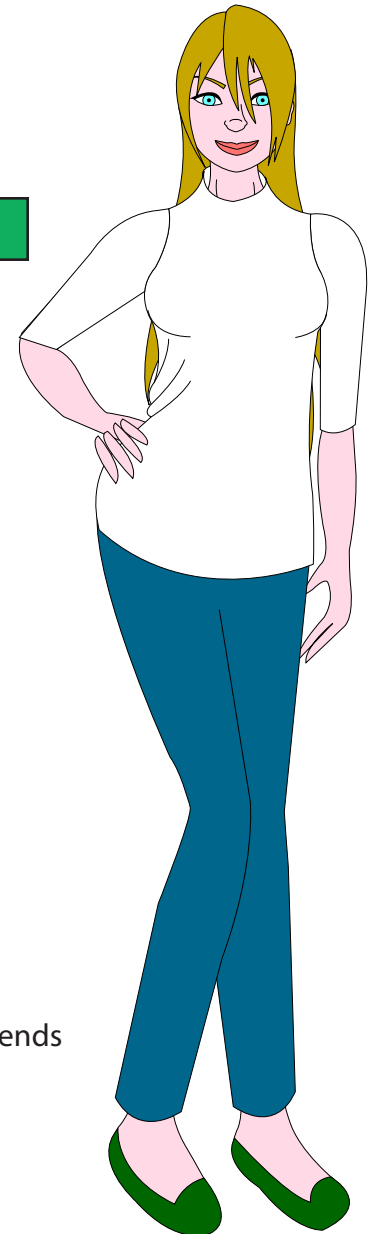
- If you edit, keep an eye on the curve that extends up from the shoulder.



Wide Funnel

Combination:

Category: Top
Top Group: Basic
Top Style: Semi-Fitted
Shoulder: Sloped
Neck Group: Specialty
Collar Style: Wide Funnel
Darts: None
Sleeve Group: Separate
Sleeve Style: Set-In Standard
Combo: None
Armhole: Standard
Sleeve Shape: Tapered
Sleeve Length: Medium



Comments:

- If you edit, keep an eye on the curve that extends up from the shoulder.

Sleeve Group: Cap

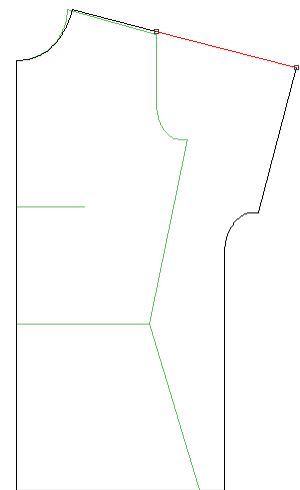
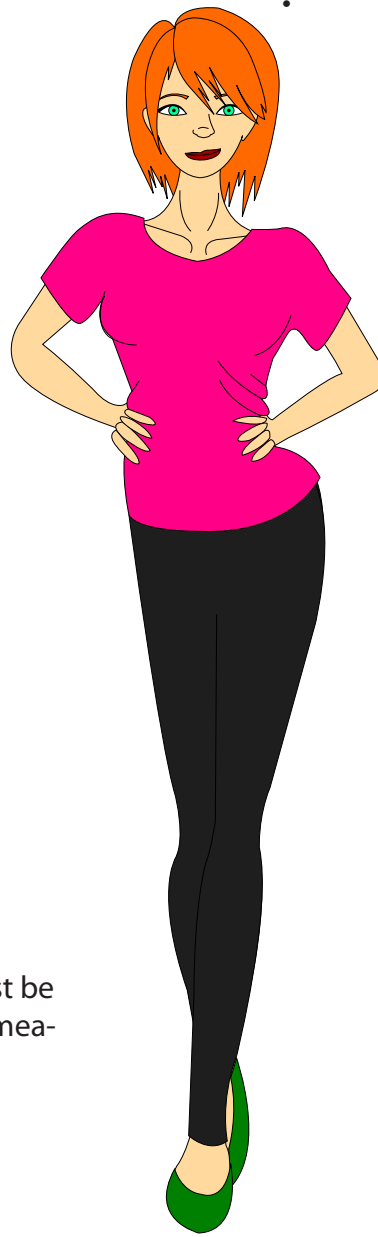
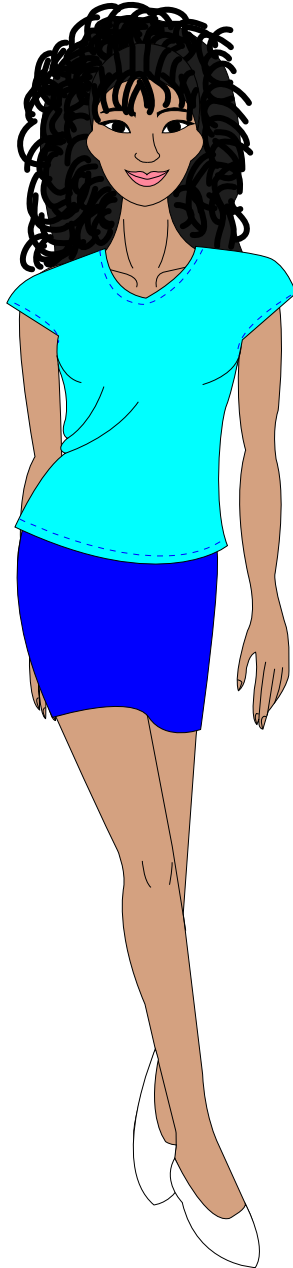
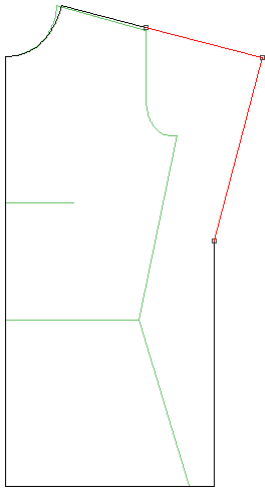
Angled Cap

Combination:

Category: Top
Top Group: Basic
Top Style: Semi-Fitted
Shoulder: Sloped
Neck Group: Round
Neck Style: Standard
Darts: None
Sleeve Group: Cap
Cap Style: Angled

Comments:

- The shoulder seam of a cap-sleeve style must be the same on front and back, thus averaged measurements must be used.



Straight Cap

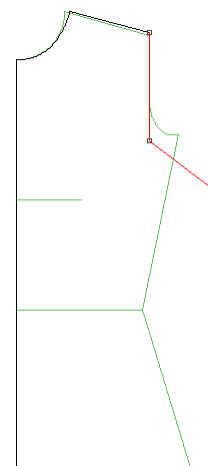
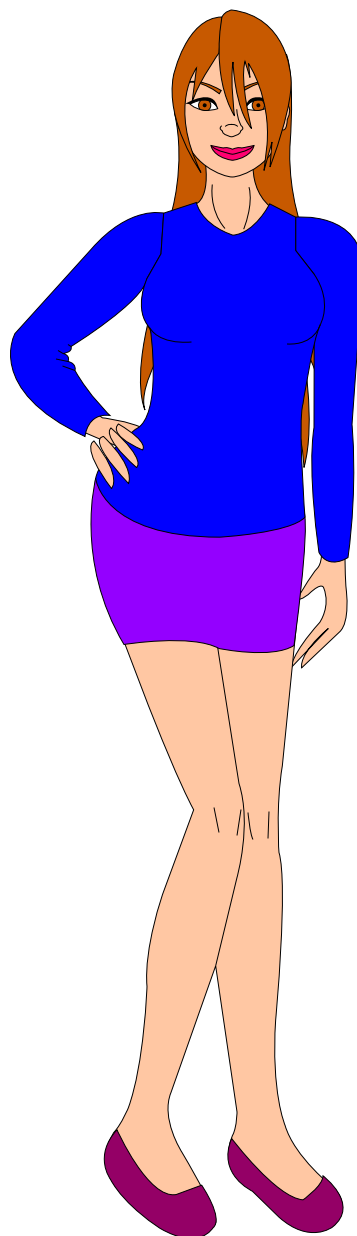
Combination:

Category: Top
Top Group: Basic
Top Style: Semi-Fitted
Shoulder: Sloped
Neck Group: Round
Neck Style: Standard
Darts: None
Sleeve Group: Cap
Cap Style: Straight

Comments:

- The shoulder seam of a cap-sleeve style must be the same on front and back, thus averaged measurements must be used.

Sleeve Group: Cap



Full-Fashion Armhole

Combination:

Category: Top

Top Group: Basic

Top Style: Semi-Fitted

Shoulder: Sloped

Neck Group: Round

Neck Style: Standard

Darts: None

Sleeve Group: Separate

Sleeve Style: Full-Fashion

Combo: None

Armhole: Standard

Sleeve Shape: Tapered

Sleeve Length: Long

Comments:

- This is a common style for knit sweaters and is used both industrially and in hand or machine knitting.
- It may also be used for sewing.

