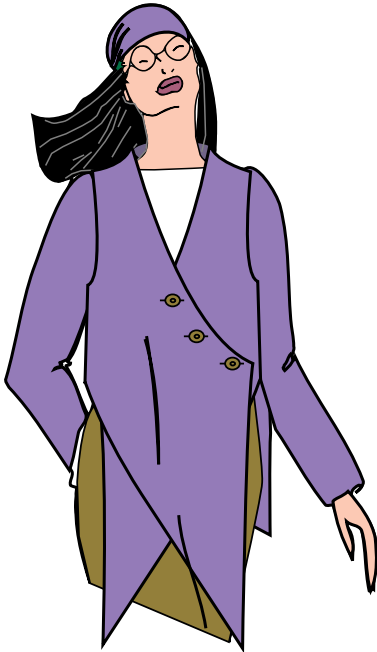




# Style Set 2 for Garment Designer



Welcome to Style Set 2.  
This set provides you with 50+ additional style elements that will mix and match with the original Garment Designer & Style Set 1 styles .



## *Key to Style Information/Illustrations*

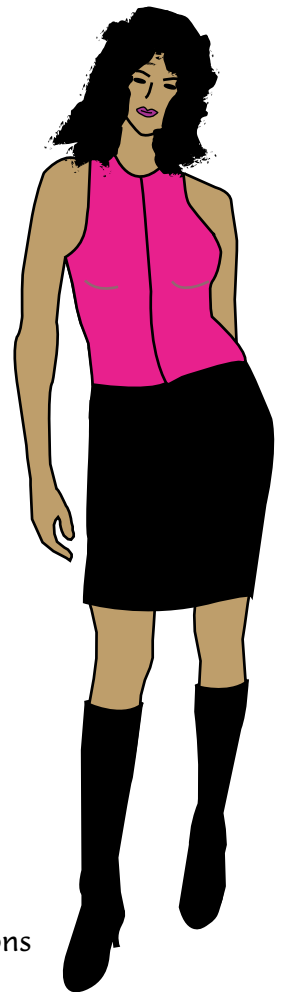
**Red Lines/Curves:** Show you new points involved in the style, plus the segments (either straight or curved) that exist with the style. Use this information to assist you in choosing styles for custom design ideas.

**Black/Red Lines:** Show you the pattern built through the combination of style menus.

**Combination:** The style menu options chosen for the style shown. Use these as inspiration.

**Illustration:** Further inspiration.

**Comments:** Helpful information about the style.



Thanks to Jon Balcalski, Mesa College (San Diego) student, who assisted with the illustrations as part of his Honors Computer Fashion course.



## Installation:

Double-click on the StyleSet2Installer file found on the CD you have received with this package. The installation will happen automatically. Various files will be updated in your Garment Designer folder.


### Note:

1. The Style Set 2 installation will update your Garment Designer application file. It will also update your Style Set 1 (SS1) file, should you have SS1 installed.
2. It is highly recommended that you only have one copy of Garment Designer on your computer. This will avoid confusing the Installer.
3. With the millions of combinations now available in Garment Designer (with Style Set 1 and Style Set 2), it is likely that there is a style combination that simply cannot work, or doesn't work properly. This booklet should alert you to known impossibilities. Please contact Cochenille if you have any problems or questions. Contact [techsupport@cochenille.com](mailto:techsupport@cochenille.com).

### What's New with the Garment Designer application file?

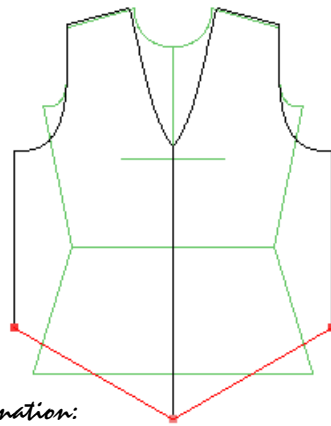
- ◆ User feedback has allowed us to see that people need and want more information regarding the building of armholes and sleeve caps. We have thus added informational warning messages that will appear if you are tweaking your armhole (for a set-in sleeve styles) in such a manner that a good armhole and sleeve will not result. The new warnings help you to see what the potential problem is.
- ◆ We also narrowed the width of the V-necklines slightly.
- ◆ The sleeveless style was changed to prevent angled side seams that occurred if you moved between multiple style menus. Since the armhole builds after the body style, angled side seams occasionally occurred. Now they do not, but you will need to ensure that the armhole fits close enough to the body (as per your taste).
- ◆ The minimum gauge was lowered to .2 stitches per inch. This will better serve the modular knitting audience as well as people who crochet.

### What's New with the update to Style Set 1?

- ◆ We added grey straight of grain lines to the asymmetrical styles.
  - ◆ We also added grey lines to indicate the foldlines on foldback collar styles (as we did in Style Set 2).
- 

# Category: Top      Top Group: Basic

## Top Style: Tip Center Angle

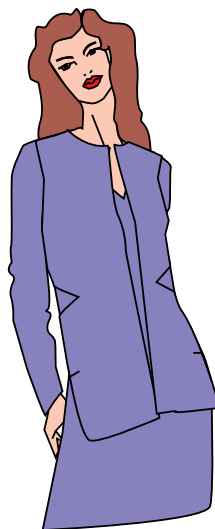
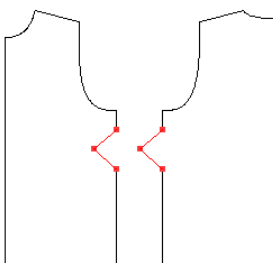
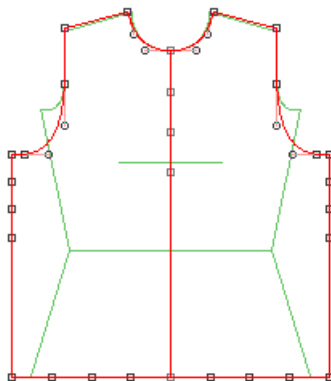


*Combination:*  
 Category: Top  
 Top Group: Basic  
 Top Style: Tip CF Angle  
 Shoulder: Sloped  
 Neck Group: V  
 Neck Style: Medium Curved  
 Darts: None  
 Sleeve Group: Separate  
 Sleeve Style: Set-In Standard  
 Combo: None  
 Armhole: Standard  
 Sleeve Shape: Tapered  
 Sleeve Length: Long

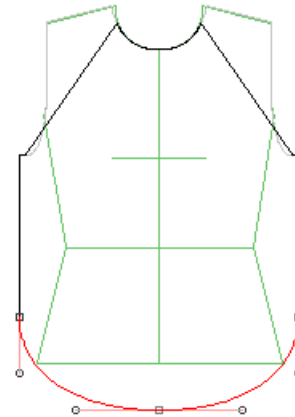
### Comments:

- ♦ Garment length is measured to the lower side seam point.
- ♦ Most of the Asymmetrical neck styles will extend straight from the CF line (as opposed to continuing on the angle).

## Top Style: Average More Points



## Top Style: Tip Center Curve



*Combination:*  
 Category: Top  
 Top Group: Basic  
 Top Style: Tip CF Curve  
 Shoulder: Sloped  
 Neck Group: Round  
 Neck Style: Standard  
 Darts: None  
 Sleeve Group: Separate  
 Sleeve Style: Set-In  
 Combo: Raglan  
 Armhole: Standard  
 Sleeve Shape: Straight  
 Sleeve Length: Long

### Comments:

- ♦ Garment length is measured to the lower side seam point.

### Combination:

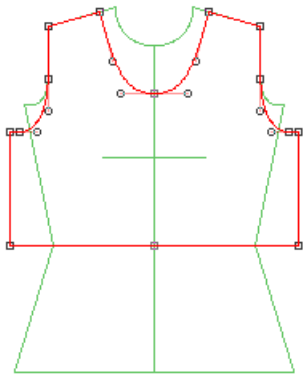
Category: Top  
 Top Group: Basic  
 Top Style: Average More Points  
 Shoulder: Sloped  
 Neck Group: Round  
 Neck Style: Standard  
 Darts: None  
 Sleeve Group: Separate  
 Sleeve Style: Set-In Standard  
 Combo: None  
 Armhole: Standard  
 Sleeve Shape: Tapered  
 Sleeve Length: Long

### Comments:

- ♦ Extra points may be moved anywhere along the seam.
- ♦ Due to point positioning, this style does not work with all short body styles
- ♦ The illustration here uses Give/Take Symmetry.

Category: Top      Top Group: Basic

### *Top Style: Waist-Length Straight*



#### *Combination:*

Category: Top  
Top Group: Basic  
Top Style: Waist-Length Straight  
Shoulder: Sloped  
Neck Group: Scoop  
Neck Style: Wide  
Darts: None  
Sleeve Group: Separate  
Sleeve Style: Set-In  
Combo: None  
Armhole: Standard  
Sleeve Shape: Tapered  
Sleeve Length: Medium

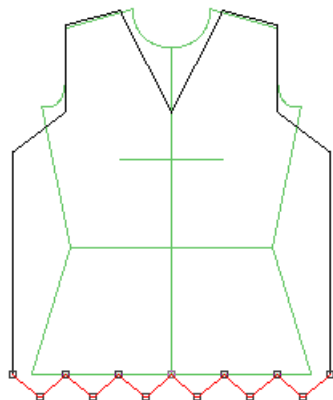
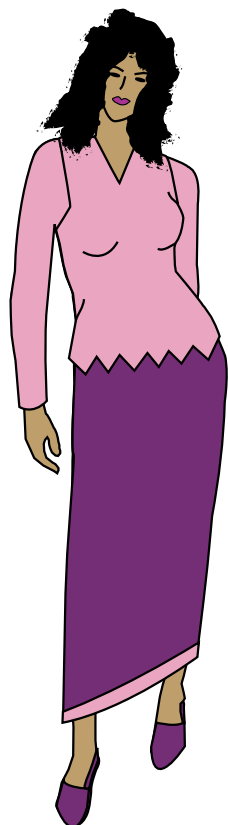
#### *Comments:*

- ◆ This style is ideal for use with top/bottom designs.
- ◆ If used with body darts, the lower dart will extend off the bottom of the garment. Ignore the lower part.
- ◆ Custom garment lengths will result in a non-waist length.

## Category: Top      Top Group: Basic

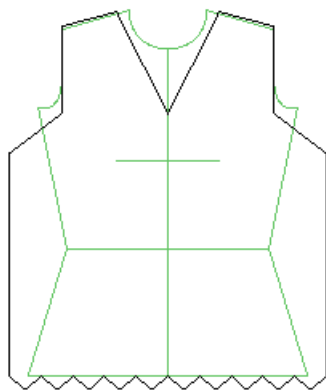
### Top Style: Angled Scallop Hem

(Medium or Large)



#### Combination:

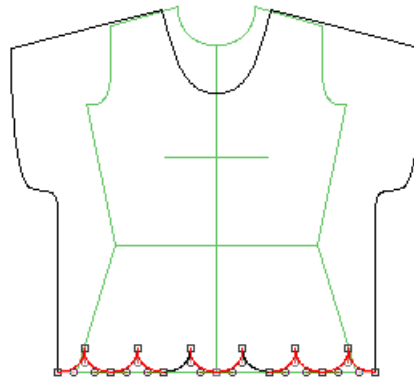
Category: Top  
Top Group: Basic  
Top Style: Angled Scallop Hem  
Shoulder: Sloped  
Neck Group: V  
Neck Style: High  
Darts: None  
Sleeve Group: Separate  
Sleeve Style: Full-Fashioned (SS1)  
Combo: None  
Armhole: Standard  
Sleeve Shape: Tapered  
Sleeve Length: Long



### Top Style: Round Scallop Hem

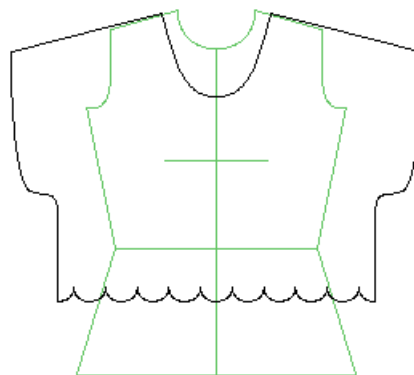
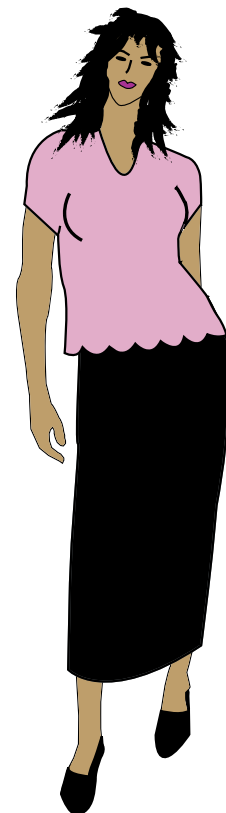
Medium = 10 scallops

Large = 6 scallops



#### Combination:

Category: Top  
Top Group: Basic  
Top Style: Round Scallop Hem  
Shoulder: Sloped  
Neck Group: Scoop  
Neck Style: Wide  
Darts: None  
Sleeve Group: Cap (SS2)  
Cap Style: Curve 1 (SS2)

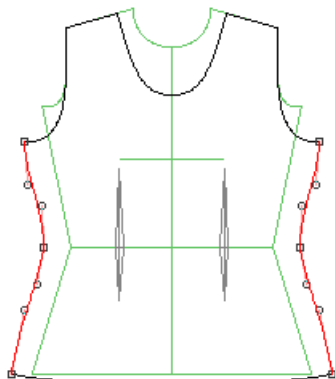


#### Comments:

- ◆ The scallops do not self-adjust as you move the side seam, however, you can tweak their widths manually. Knitters may have to 'fudge' the hip measurement in the Sloper to temporarily create perfect shaping without nudging points. (Do not save the edited sloper from the Sloper menu). There are 10 (Medium styles) or 6 (Large styles) scallops. Tweak the sloper until the garment with ease is easily divisible by these numbers.
- ◆ Knitters may also drag the lower scallop points down to possibly adjust the shaping instructions so that the increases occurring on the scallop work more to one's liking.
- ◆ This style does not work with all style options/combinations.
- ◆ The width of a scallop is not necessarily proportional to its width, although you may adjust the points if this is a priority.
- ◆ If combined with a scalloped sleeve style, the sleeve will take its scallop width from the bodice.
- ◆ If combined with Asymmetrical necklines, the scallops do not continue beyond center front.
- ◆ Scallop styles do not work with Raglan or Saddle Shoulder styles.

## Category: Top      Top Group: Contoured

### Top Style: Semi-Fitted 2 Curve Side



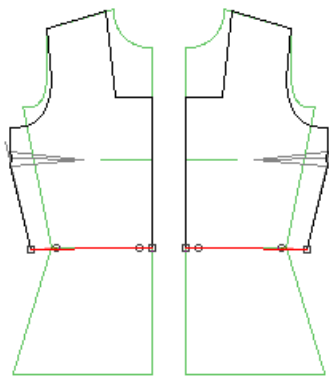
#### Combination:

Category: Top  
Top Group: Contoured  
Top Style: Semi-Fitted 2 Curve  
Shoulder: Sloped  
Neck Group: Scoop  
Neck Style: Wide  
Darts: Body  
Sleeve Group: Separate  
Sleeve Style: Set-In Standard  
Combo: None  
Armhole: Standard  
Sleeve Shape: Tapered  
Sleeve Length: Long

#### Comments:

- ◆ A smoother side seam curve is achieved with this style.
- ◆ Keep the side point at waist level.

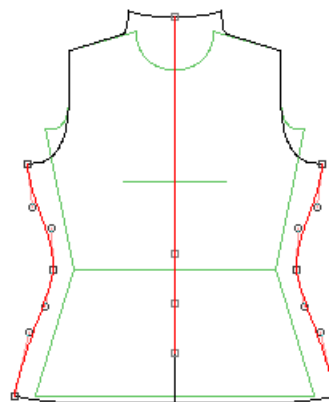
### Top Style: Waist-Length Fitted



#### Combination:

Category: Top  
Top Group: Contoured  
Top Style: Waist-Length Fitted  
Curve  
Shoulder: Sloped  
Neck Group: Square  
Neck Style: Angled  
Darts: Side Trued  
Sleeve Group: Separate  
Sleeve Style: Set-In  
Combo: None  
Armhole: Standard  
Sleeve Shape: Tapered  
Sleeve Length: Long

### Top Style: Semi-Fitted 2 Curve Side More Points

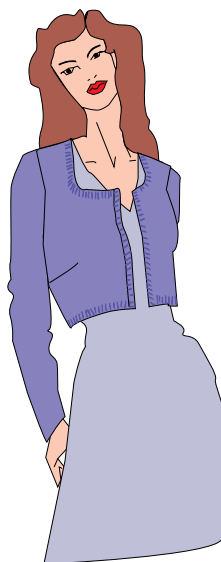


#### Combination:

Category: Top  
Top Group: Contoured  
Top Style: Semi-Fitted 2 Curve  
More Points  
Shoulder: Sloped  
Neck Group: Specialty  
Neck Style: Narrow Funnel  
Darts: None  
Sleeve Group: Separate  
Sleeve Style: Set-In  
Combo: None  
Armhole: Standard  
Sleeve Shape: Tapered  
Sleeve Length: Long

#### Comments:

- ◆ The additional points are at center front.
- ◆ The illustration here shows the center new point moved to create a design 'tab'.

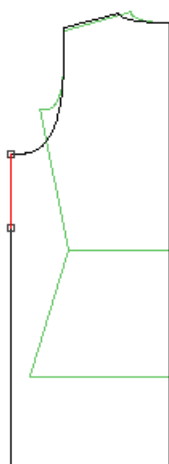
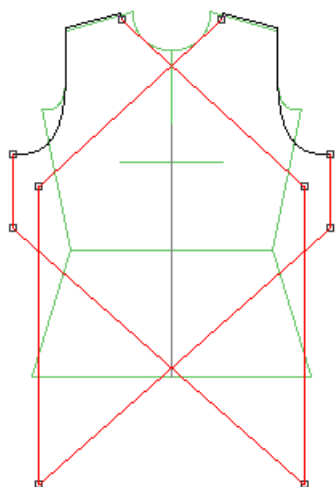


#### Comments:

- ◆ This style is ideal for use with top/ bottom designs.
- ◆ If used with body darts, the lower dart will extend off the bottom of the garment. Ignore the lower part.
- ◆ If you adjust the garment length, this style will not end at the waist. Backspace over custom length to return to the default waist length.
- ◆ Not all style options work with waist-length styles.

Category: Top      Top Group: Body-Neck Combo

### *Body-Neck Combo Style: Criss-Cross Wrap 1*



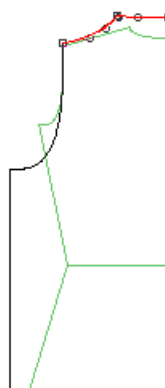
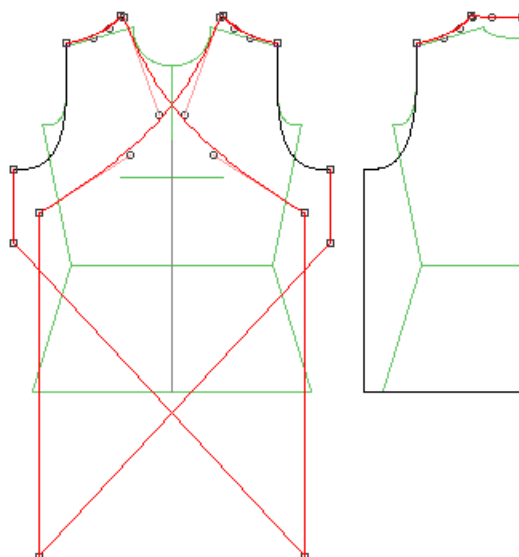
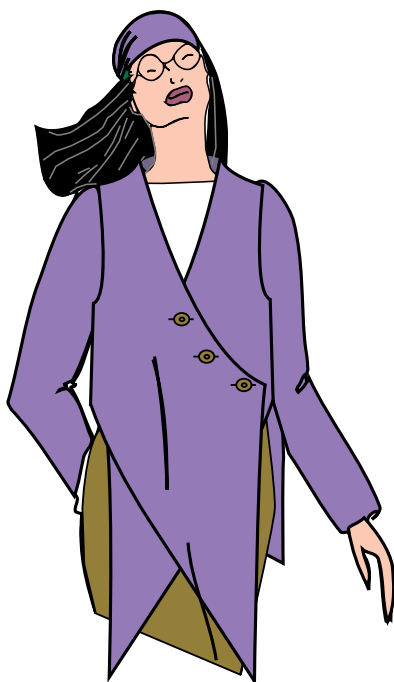
#### *Combination:*

Category: Top  
Top Group: Basic  
Top Style: Average  
Shoulder: Sloped  
Neck Group: Asymmetrical  
Neck Style: Criss-Cross Wrap 1  
Darts: None  
Sleeve Group: Separate  
Sleeve Style: Set-In  
Combo: None  
Armhole: Standard  
Sleeve Shape: Tapered  
Sleeve Length: Long

#### *Comments:*

- ◆ This style is part of a new top category which combines the top, neck and shoulder style.
- ◆ The neckline of this style is a straight 'v'.
- ◆ If you change the garment length of this style, you will need to adjust a point on the front hemline to recreate the straight line unless you want to move this point for design reasons.

### *Body-Neck Combo Style: Criss-Cross Wrap 2*

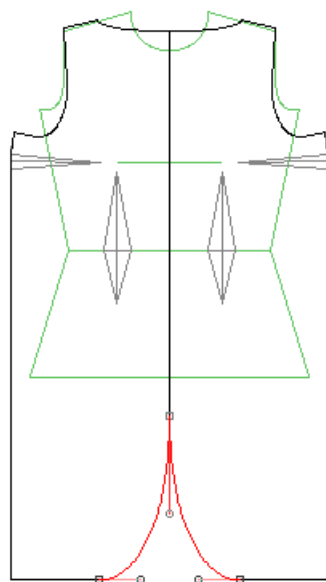
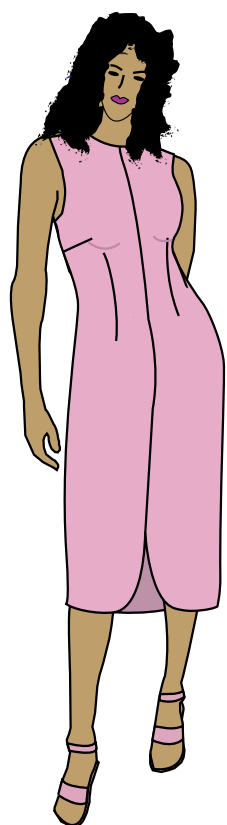


#### *Comments:*

- ◆ This style is part of a new top category which combines the top, neck and shoulder style.
- ◆ The neckline of this style is a curved V and the shoulder/neck area raises to form a stand-up collar style.
- ◆ If you change the garment length of this style, you will need to adjust a point on the front hemline to recreate the straight line unless you want to move this point for design reasons.



*Dress Style: Center Round Hem*



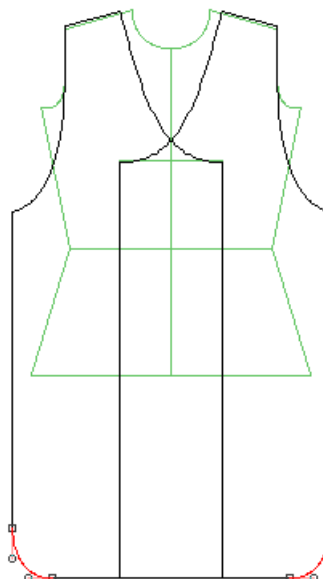
*Combination:*

Category: Dress  
 Dress Group: Contoured  
 Dress Style: Center Round Hem  
 Shoulder: Sloped  
 Neck Group: Boat  
 Neck Style: Modified  
 Darts: Body Plus Side Trued  
 Sleeve Group: Sleeveless  
 Armhole: Standard

*Comments:*

- ◆ The curve appears at center front only.

*Dress Style: Side Round Hem*



*Combination:*

Category: Dress  
 Dress Group: Contoured  
 Dress Style: Side Round Hem  
 Shoulder: Sloped  
 Neck Group: Asymmetrical (SS1)  
 Neck Style: V-Curve  
 Darts: None  
 Sleeve Group: Separate  
 Sleeve Style: Dolman  
 Combo: None  
 Armhole: Standard  
 Sleeve Shape: Slim  
 Sleeve Length: Long

*Comments:*

- ◆ The height of the curve may be adjusted through point movement.
- ◆ In sewing, a narrow turned hem would work well to finish this style.



# Shoulder Style

## Shoulder Style: Angle Back

### Combination:

Category: Top

Top Group: Contoured

Top Style: Bolero Angle (SS1)

Shoulder: Angled Back

Neck Group: Square

Neck Style: Angled

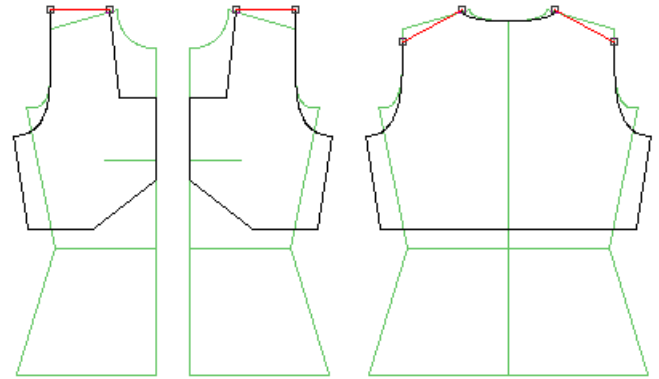
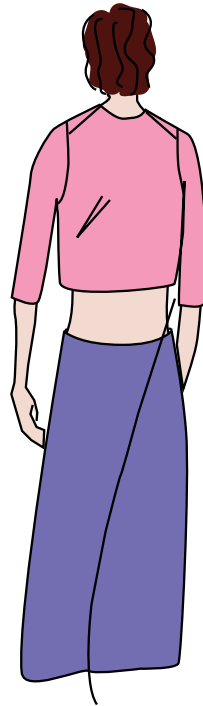
Darts: None

Sleeve Group: Separate

Armhole: Standard

Sleeve Shape: Tapered

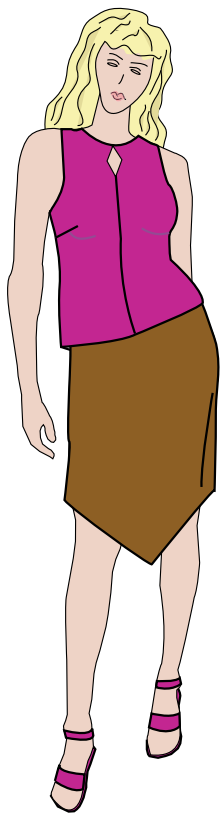
Sleeve Length: Medium



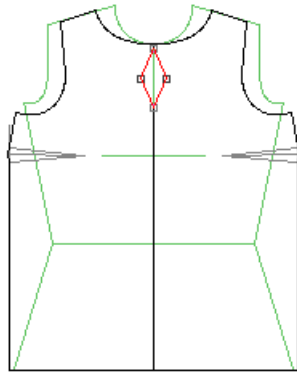
### Comments:

- ◆ The back shoulder seam will be longer than the front and will need to be eased when sewing the two together.
- ◆ Match the center of sleeve to the original shoulder notch on the front bodice.
- ◆ This style will not work with Attached and Cap Sleeves as well as Raglan and Saddle Shoulder styles. In addition, it doesn't work with Side Darts in the bodice as darts change the armhole and this style is already thinking beyond the normal armhole.

# Necklines: Round



*Neck Group: Round*  
*Neck Style: Keyhole1*

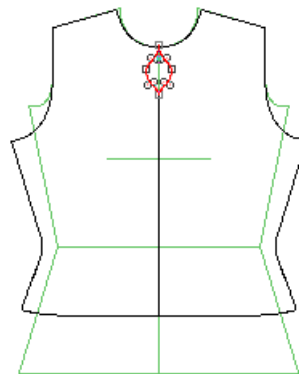


*Combination:*

Category: Top  
Top Group: Basic  
Top Style: Camisole (SS1)  
Shoulder: Sloped  
Neck Group: Round  
Neck Style: Keyhole 1  
Darts: Side Trued  
Sleeve Group: Sleeveless  
Armhole: Standard

*Comments:*

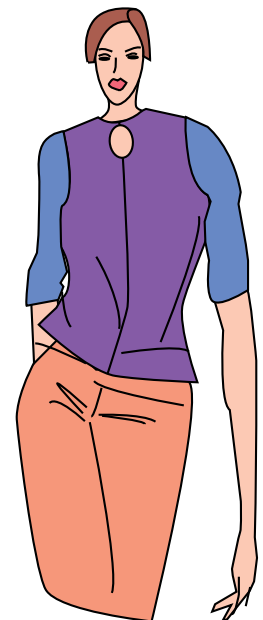
- ◆ This style does not display in joined mode. You can still cut on the fold and use a rectangle to face the opening.
- ◆ Knitters may begin their separate neck side shaping at the beginning of the keyhole.
- ◆ The skirt illustrated here is easily created by moving the lower point of the center front pattern down.



*Neck Group: Round*  
*Neck Style: Keyhole2*

*Combination:*

Category: Top  
Top Group: Contoured  
Top Style: Peplum (SS1)  
Shoulder: Sloped  
Neck Group: Round  
Neck Style: Keyhole 2  
Darts: None  
Sleeve Group: Separate  
Sleeve Style: Standard  
Combo: None  
Armhole: Standard  
Sleeve Shape: Tapered  
Sleeve Length: Medium

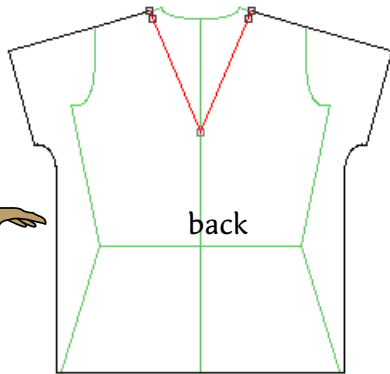
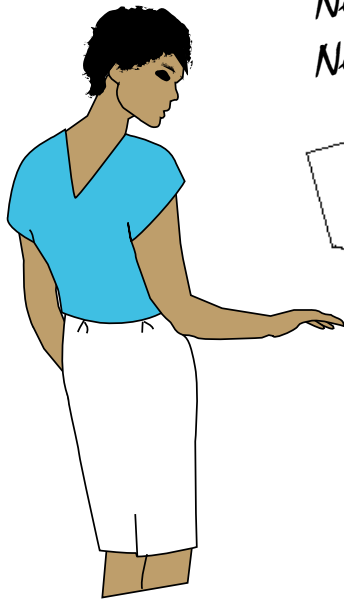


*Comments:*

- ◆ See comments for Keyhole1.

## Necklines: V

Neck Group: V  
Neck Style: V-Back



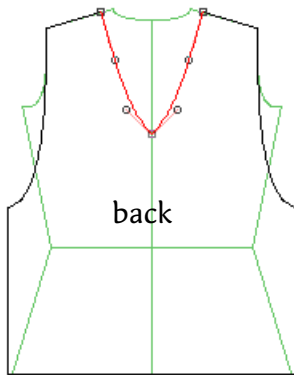
### Combination:

Category: Top  
Top Group: Basic  
Top Style: Fitted  
Shoulder: Sloped  
Neck Group: V  
Neck Style: V-Back  
Darts: None  
Sleeve Group: Cap (SS1)  
Cap Style: Straight (SS1)  
Combo: None

### Comments:

- ♦ If you want to combine this back with a different front neckline, do so in 2 separate files, ensuring that the neck width is the same for both.

Neck Group: V  
Neck Style: V-Back Curved



### Combination:

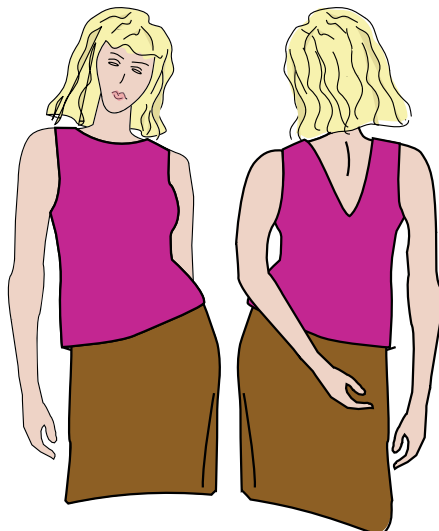
Category: Top  
Top Group: Basic  
Top Style: Fitted  
Shoulder: Sloped  
Neck Group: V  
Neck Style: V-Back Curved  
Darts: None  
Sleeve Group: Separate  
Sleeve Style: Dolman  
Combo: None  
Armhole: Standard  
Sleeve Shape: Slim  
Sleeve Length: Long



### Comments:

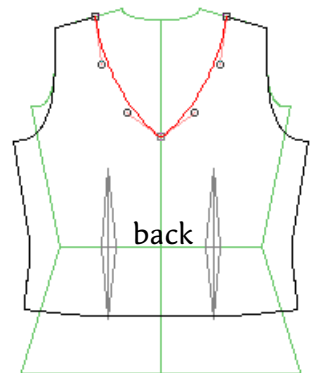
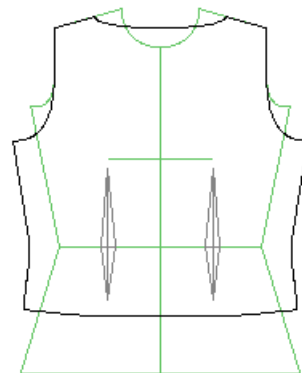
- ♦ See comments for V-Back.

Neck Group: Boat  
Neck Style: Modified with V Back



### Combination:

Category: Top  
Top Group: Contoured  
Top Style: Peplum (SS1)  
Shoulder: Sloped  
Neck Group: Boat  
Neck Style: Modified with V-Back  
Darts: Body  
Sleeve Group: Sleeveless  
Armhole: Standard



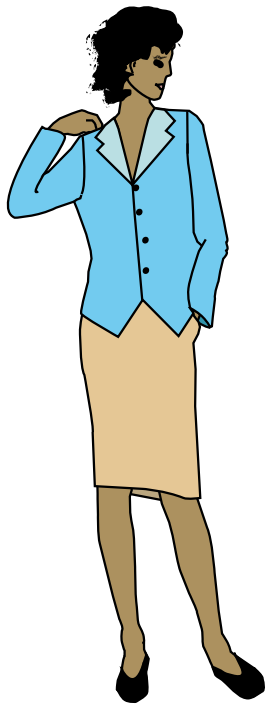
### Comments:

- ♦ See comments for V-Back.

# Necklines: Collar-Style

Neck Group: Collar-Style

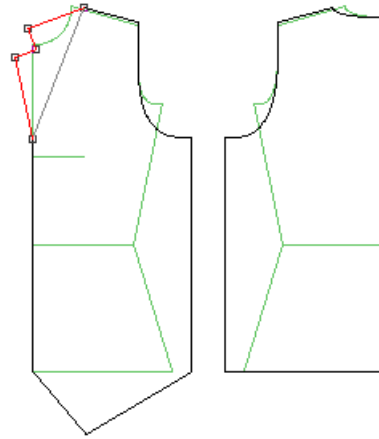
Neck Style: Foldback Notched 1



## Combination:

Category: Top  
Top Group: Vest  
Top Style: Tip 2 Long  
Shoulder: Sloped  
Neck Group: Collar-Style  
Neck Style: Foldback Notched 1  
Darts: None  
Sleeve Group: Separate  
Sleeve Style: Square  
Combo: None  
Armhole: Standard  
Sleeve Shape: Tapered  
Sleeve Length: Long

Note: Join mode is not available with all Collar-Style styles.

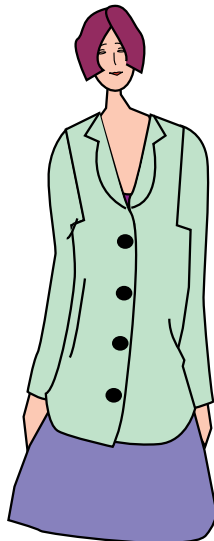


## Comments:

- ◆ This collar folds back along the grey line.
- ◆ The collar is on the front piece only.
- ◆ Sleeves have been added to this style.  
This is possible with all the vest styles and can be achieved by simply turning on the display of sleeves (from the Display menu) and selecting a sleeve group style.

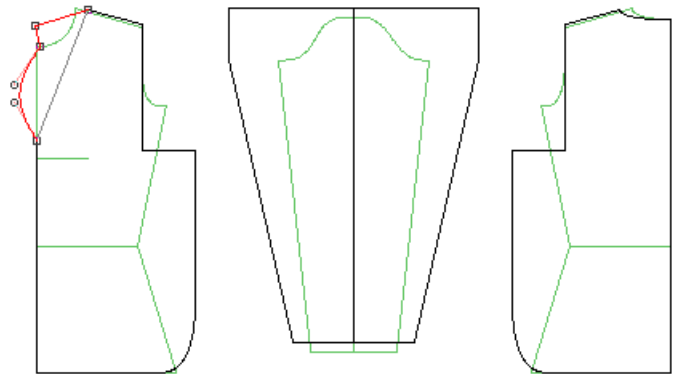
Neck Group: Collar-Style

Neck Style: Foldback Notched 2



## Comments:

- ◆ This collar folds back along the grey line.
- ◆ The collar is on the front piece only.



## Combination:

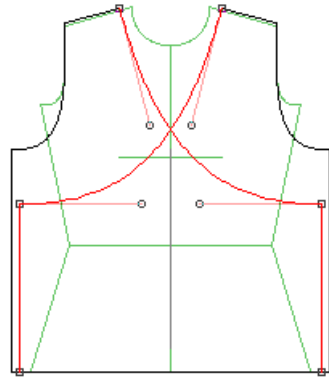
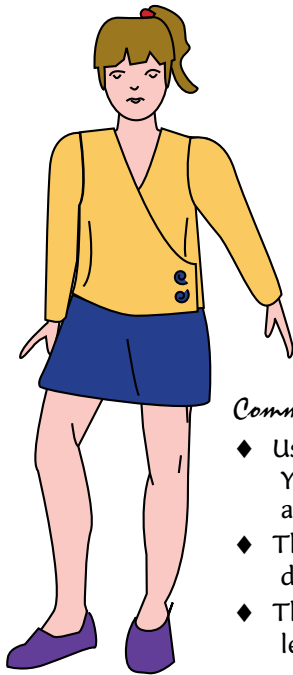
Category: Top  
Top Group: Basic  
Top Style: Shirtwaist (SS1)  
Shoulder: Sloped  
Neck Group: Collar-Style  
Neck Style: Foldback Notched 2  
Darts: None  
Sleeve Group: Separate  
Sleeve Style: Square  
Combo: None  
Armhole: Standard  
Sleeve Shape: Tapered  
Sleeve Length: Long

# Necklines: Asymmetrical

Neck Group: Asymmetrical

Neck Style: Surplice

Note: Join mode is not available to asymmetrical neck styles.



*Comments:*

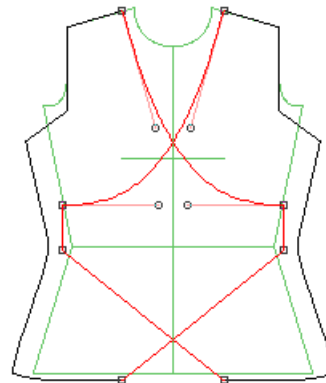
- ◆ Use buttons, ties or other forms of closure. You will need to secure the inside edge as well as the outside.
- ◆ This style can be lengthened to become a dress or shortened to waist length.
- ◆ The illustration has shortened the garment length.

*Combination:*

Category: Top  
Top Group: Basic  
Top Style: Average  
Shoulder: Sloped  
Neck Group: Asymmetrical  
Neck Style: Surplice  
Darts: None  
Sleeve Group: Separate  
Sleeve Style: Set-In Standard  
Combo: None  
Armhole: Standard  
Sleeve Shape: Tapered  
Sleeve Length: Long

Neck Group: Asymmetrical

Neck Style: Angled

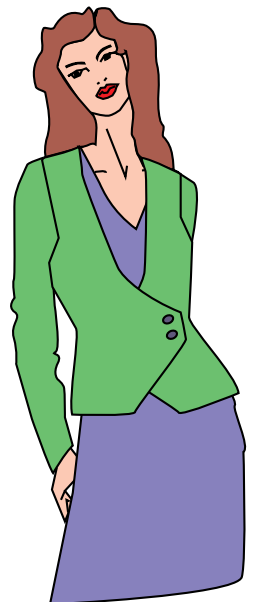


*Comments:*

- ◆ Numerous looks can be achieved by moving points around on this style.
- ◆ This neckline doesn't work with all short body styles. You may need to adjust points to correct the pattern.

*Combination:*

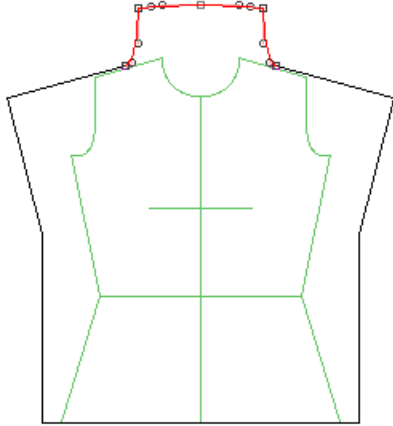
Category: Top  
Top Group: Contoured  
Top Style: Fitted  
Shoulder: Sloped  
Neck Group: Asymmetrical  
Neck Style: Angled  
Darts: None  
Sleeve Group: Separate  
Sleeve Style: Full-Fashioned (SS1)  
Combo: None  
Armhole: Standard  
Sleeve Shape: Tapered  
Sleeve Length: Long



# Necklines: Specialty

*Neck Group: Specialty*

*Neck Style: Tall Wide Funnel*



## *Combination:*

Category: Top

Top Group: Basic

Top Style: Fitted

Shoulder: Sloped

Neck Group: Specialty

Neck Style: Tall Wide Funnel

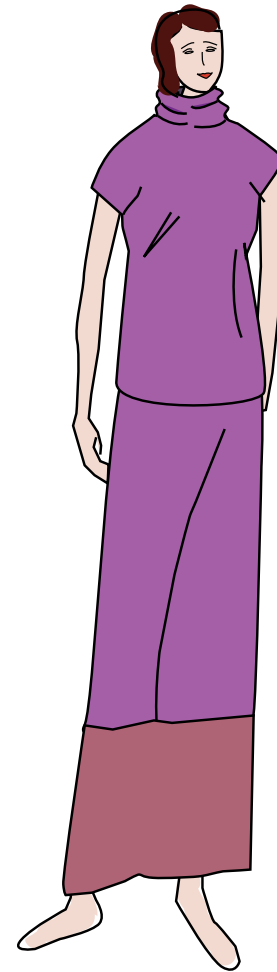
Darts: None

Sleeve Group: Cap (SS1)

Cap Style: Angled

## *Comments:*

- ◆ This style is best created with a soft fabric or knit.
- ◆ Funnel necklines do not work with Raglan or Saddle Shoulder styles.
- ◆ The skirt illustrated here could be achieved by splicing the paper pattern of your skirt pattern and cutting two fabrics.

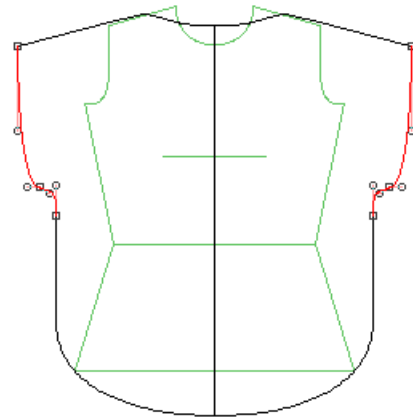


# Sleeve Group: Cap

## Sleeve Group: Cap Cap Style: Curve 1



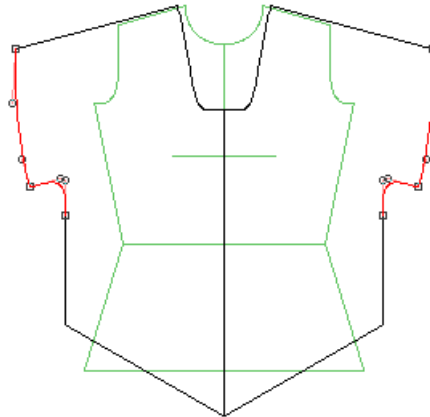
*Combination:*  
Category: Top  
Top Group: Basic  
Top Style: Tip CF Curve (SS2)  
Shoulder: Sloped  
Neck Group: Boat  
Neck Style: Modified  
Darts: None  
Sleeve Group: Cap  
Sleeve Style: Curve 1



### *Comments:*

- ◆ Use 'final pattern' view to display and print notches.
- ◆ All cap sleeve styles average certain custom body measurements so that the front and back shoulder seams may be the same length, and thus match in seaming things together. If points in certain styles seem out of place, you may find that you need to employ further averaging (as found in the Options/Garment menu).

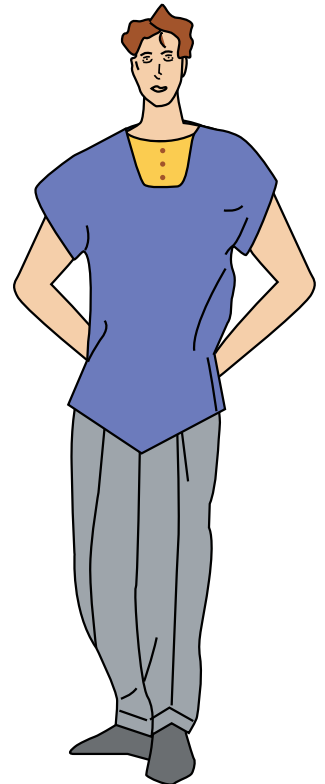
## Sleeve Group: Cap Cap Style: Curve 2



### *Comments:*

- ◆ Numerous looks can be achieved by moving points around on this style.

*Combination:*  
Category: Top  
Top Group: Basic  
Top Style: Tip CF Angle (SS2)  
Shoulder: Sloped  
Neck Group: Scoop  
Neck Style: Deep  
Darts: None  
Sleeve Group: Cap  
Sleeve Style: Curve 2



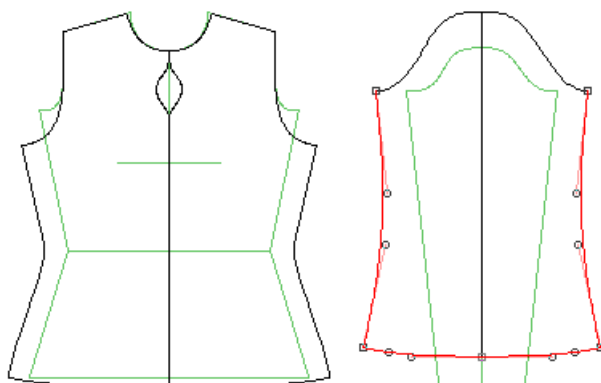


## Sleeve Group: Separate    Sleeve Shape

*Sleeve Group: Separate*  
*Sleeve Style: Bell*

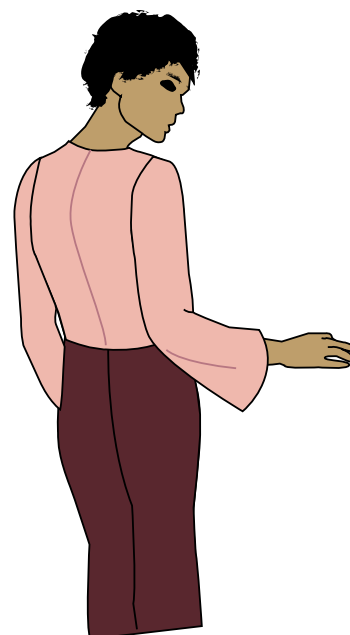
*Combination:*

Category: Top  
 Top Group: Contoured  
 Top Style: Fitted  
 Shoulder: Sloped  
 Neck Group: Round  
 Neck Style: Keyhole 2 (SS2)  
 Darts: None  
 Sleeve Group: Separate  
 Sleeve Style: Set-In Standard  
 Combo: None  
 Armhole: Standard  
 Sleeve Shape: Bell  
 Sleeve Length: Long



*Comments:*

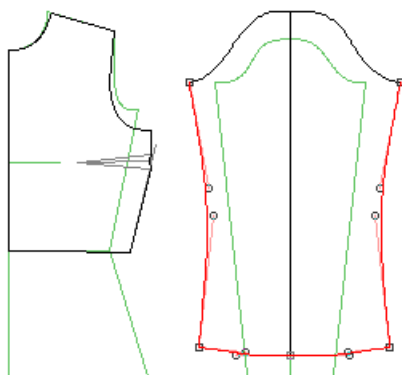
- ◆ The amount of bell curve may be adjusted using the curve control points.
- ◆ You may control the height of the narrowest point of the sleeve by adjusting the length of the curve control arms.



*Sleeve Group: Separate*  
*Sleeve Shape: Bell Slim*

*Combination:*

Category: Top  
 Top Group: Contoured  
 Top Style: Waist-Length Fitted (SS2)  
 Shoulder: Sloped  
 Neck Group: Round  
 Neck Style: Standard  
 Darts: None  
 Sleeve Group: Separate  
 Sleeve Style: Set-In Standard  
 Combo: None  
 Armhole: Standard  
 Sleeve Shape: Bell Slim  
 Sleeve Length: Long



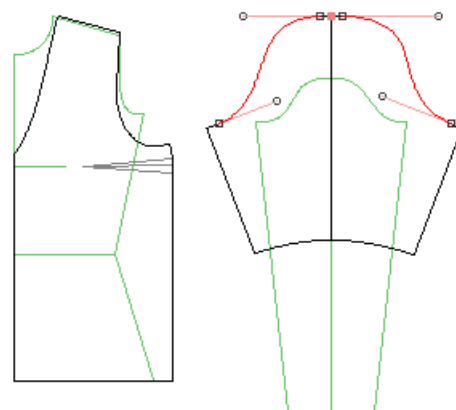
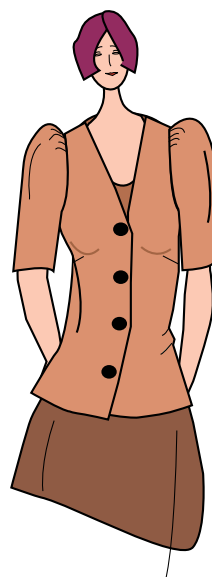
*Comments:*

- ◆ See above bell sleeve comments

*Sleeve Group: Separate*  
*Sleeve Style: Puffed*

*Combination:*

Category: Top  
 Top Group: Basic  
 Top Style: Fitted  
 Shoulder: Sloped  
 Neck Group: V  
 Neck Style: Medium Curved  
 Darts: Side Trued  
 Sleeve Group: Separate  
 Sleeve Style: Set-In Standard  
 Combo: None  
 Armhole: Standard  
 Sleeve Shape: Puffed  
 Sleeve Length: Medium



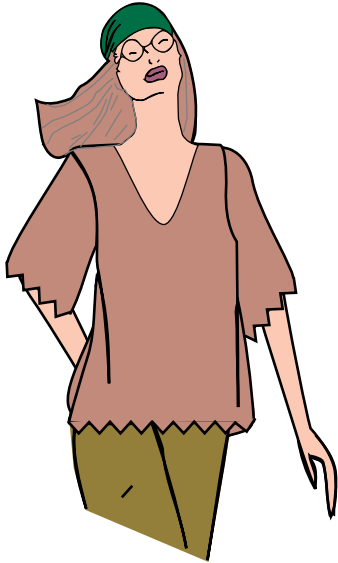
*Comments:*

- ◆ Use notches in Final Pattern mode to assist in setting the sleeve.

## Sleeve Group: Separate    Sleeve Shape

*Sleeve Group: Separate*

*Sleeve Shape: Straighter Angle-Scallop*



*Combination:*

Category: Top

Top Group: Basic

Top Style: Med Angle-Scallop Hem (SS2)

Shoulder: Sloped

Neck Group: V

Neck Style: Medium

Darts: Side Trued

Sleeve Group: Separate

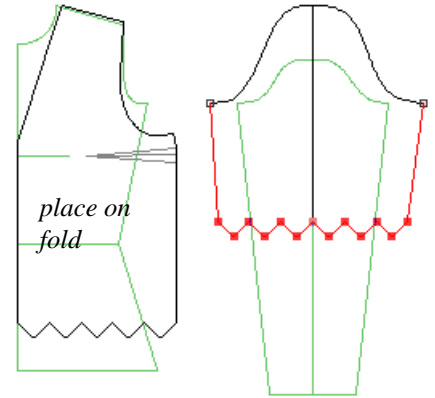
Sleeve Style: Set-In Standard

Combo: None

Armhole: Standard

Sleeve Shape: Straighter Angle-Scallop

Sleeve Length: Medium

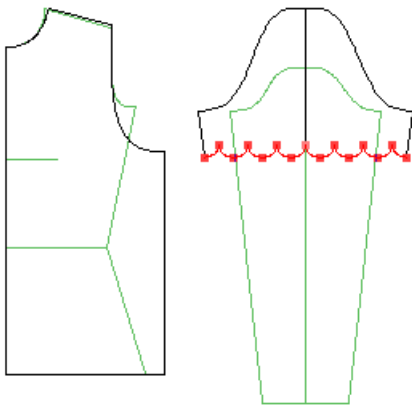


*Comments:*

- ◆ The scallop width is taken from the width of the scallop on the bodice.

*Sleeve Group: Separate*

*Sleeve Shape: Straighter Curve-Scallop*



*Combination:*

Category: Top

Top Group: Basic

Top Style: Bolero Curve (SS1)

Shoulder: Sloped

Neck Group: Round

Neck Style: Wide Deep

Darts: None

Sleeve Group: Separate

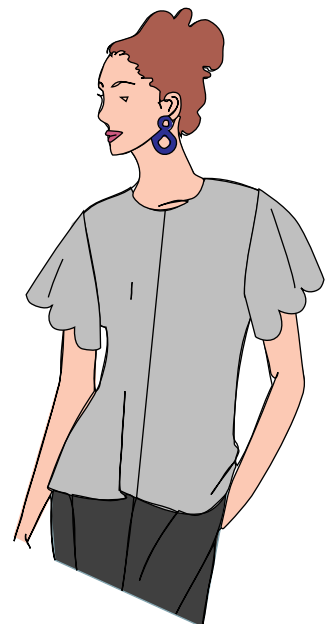
Sleeve Style: Set-In Standard

Combo: None

Armhole: Standard

Sleeve Shape: Straighter Curve-Scallop

Sleeve Length: Short

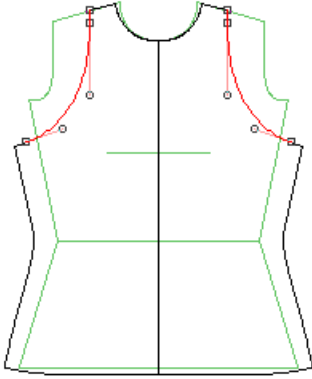


*Comments:*

- ◆ The scallop width is taken from the width of the scallop on the bodice.
- ◆ One does not need to have scallops on both bodice and sleeve.

## Sleeve Group: Sleeveless

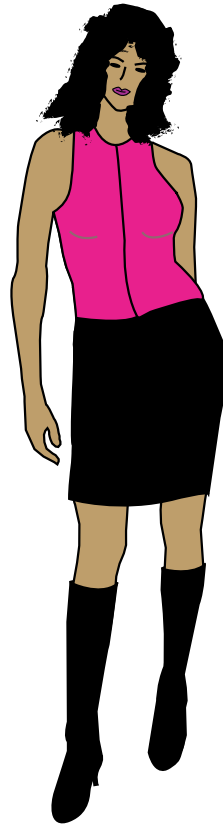
*Sleeve Group: Sleeveless*  
*Armhole: Halter*



*Combination:*  
Category: Top  
Top Group: Contoured  
Top Style: Fitted  
Shoulder: Sloped  
Neck Group: Round  
Neck Style: Standard  
Darts: None  
Sleeve Group: Sleeveless  
Sleeve Style: Halter

*Comments:*

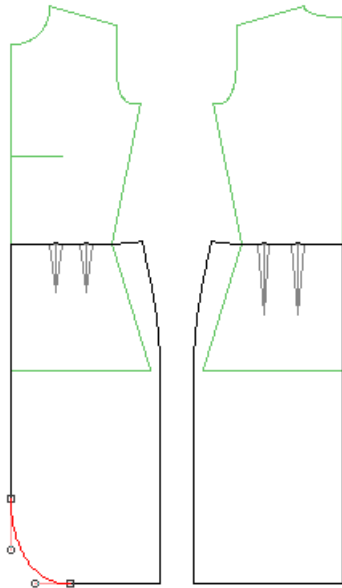
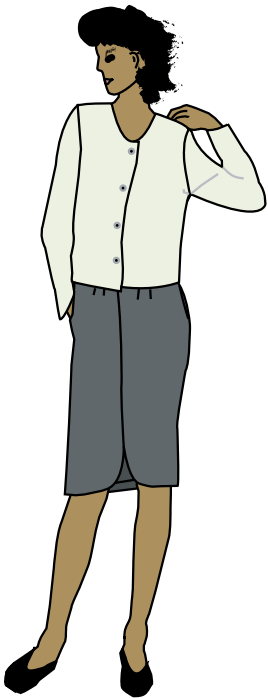
- ◆ A side bust dart may be helpful with this style to allow for a snugger fit around the armhole.



## Skirt Subcategory, Skirt Group: Straight

*Skirt Group: Straight:*

*Skirt Style: Center Round Hem*



*Combination:*

Category: Bottom

Subcategory: Skirt

Skirt Group: Straight

Skirt Style: Center Round Hem

Waist Treatment: No Treatment

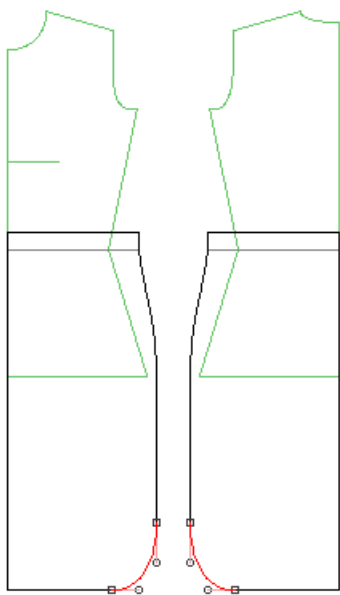
Waist Darts: Double Trued

*Comments:*

- ◆ The curve appears on front pattern pieces only.

*Skirt Group: Straight:*

*Skirt Style: Side Round Hem*



*Combination:*

Category: Bottom

Subcategory: Skirt

Skirt Group: Straight

Skirt Style: Side Round Hem

Waist Treatment: Elastic with Casing

*Comments:*

- ◆ For sewers: One could utilize a wider seam allowance and use a double-fold hem to finish the hem curve of this style (sewing). This hem could also be faced.



# Skirt Subcategory, Skirt Group: A-Line

*Skirt Group: A-line*

*Skirt Style: Standard Plus*

*Combination:*

Category: Bottom

Subcategory: Skirt

Skirt Group: A-Line

Skirt Style: Standard Plus

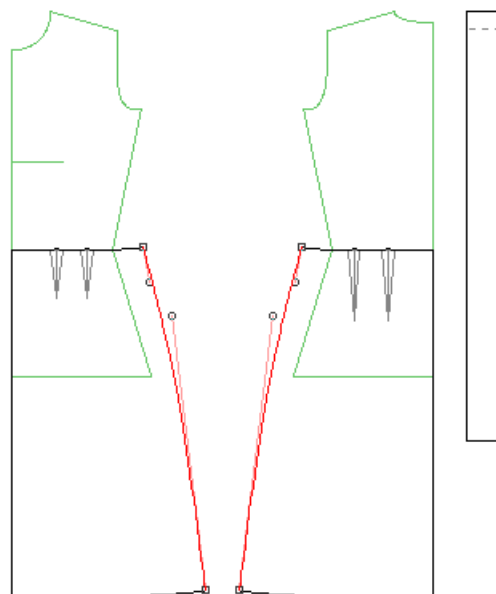
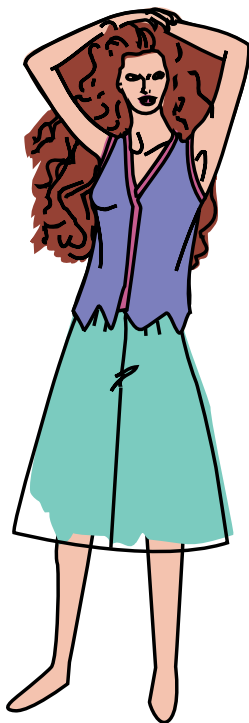
Waist Treatment: Waistband Template

Waistband: Front Closure Women

Waist Darts: Double Trued

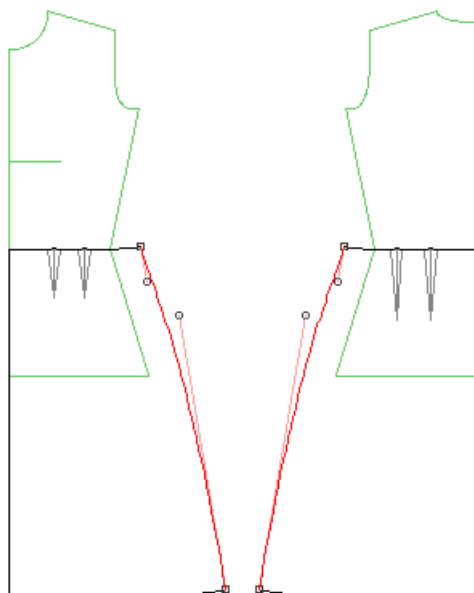
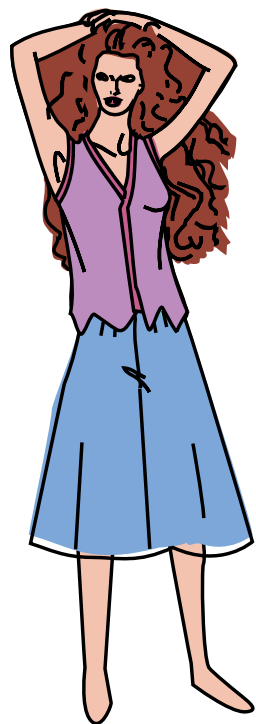
*Comments:*

- ◆ This skirt has slightly more fullness (added to the side seam) than the standard A-line skirt.



*Skirt Group: A-line*

*Skirt Style: Wide*



*Combination:*

Category: Bottom

Subcategory: Skirt

Skirt Group: A-Line

Skirt Style: Wide

Waist Treatment: Waistband Template

Waistband: Front Closure Women

Waist Darts: Double Trued

*Comments:*

- ◆ Do not exceed beyond this fullness if you want the side seams of your garment to hang properly. Move to the Flared skirt style instead.

# Skirt Subcategory, Skirt Group: Flared

*Skirt Group: Flared*

*Skirt Style: Standard*

*Combination:*

Category: Bottom

Subcategory: Skirt

Skirt Group: Flared

Skirt Style: Standard

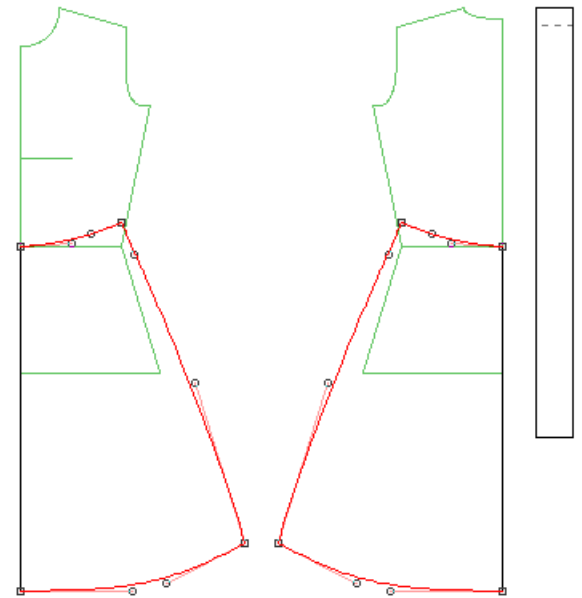
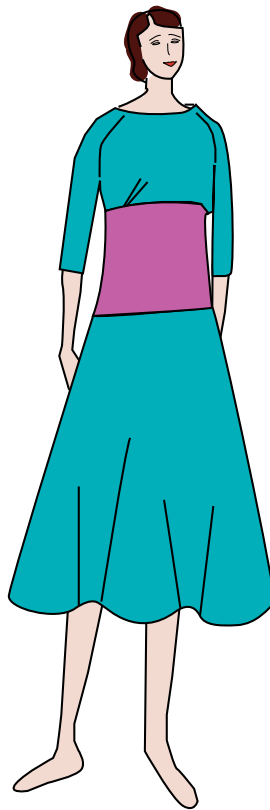
Waist Treatment: Waistband Template

Waistband: Front Closure Women

Waist Darts: Double Trued

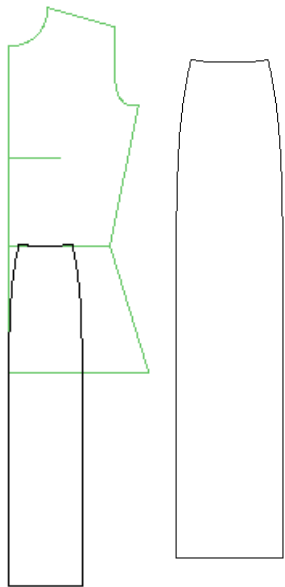
**Comments:**

- ◆ Due to the waist measurement and curve of the waistline, this style requires a waistband. It will not work with elastic/casing finishes even though the program will allow you to choose the option.



## Skirt Subcategory, Skirt Group: 8-Gore

*Skirt Group: 8-Gore*  
*Skirt Style: Fitted*



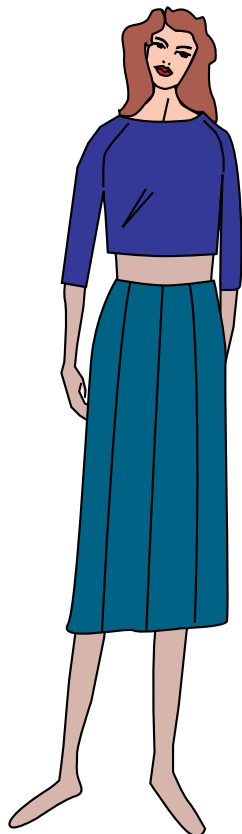
*Combination:*  
Category: Bottom  
Subcategory: Skirt  
Skirt Group: Eight-gore  
Skirt Style: Fitted  
Waist Treatment: Waistband Template  
Waistband: Back Closure

*Comments:*

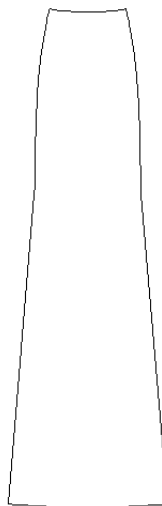
- ◆ This style may be used with any waist option, but if you choose elastic, you will still need to add a zipper closure as there is not enough waist length to get over the hips. Move to the Gather-Waist styles for elastic waist finishes.

*General 8-Gore Comments:*

- ◆ Cut 4 of front and 4 of back.
- ◆ If you are using custom measurements, the front and back patterns will most likely be different.



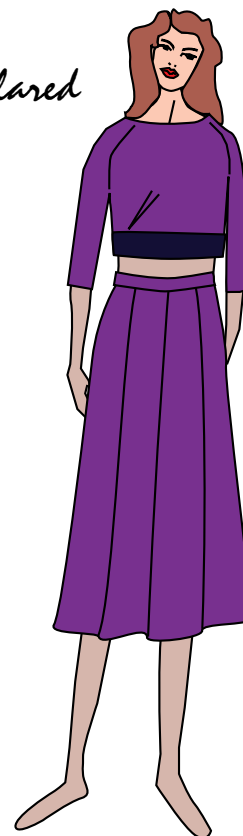
*Skirt Group: 8-Gore*  
*Skirt Style: Fitted and Flared*



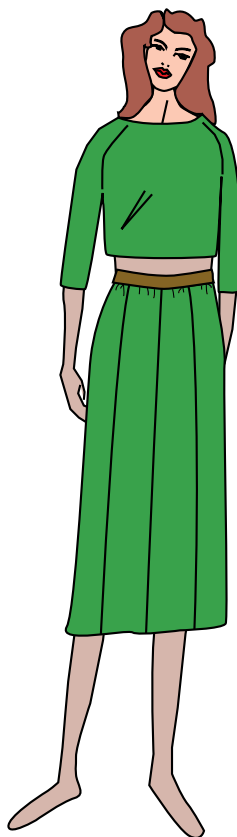
*Combination:*  
Category: Bottom  
Subcategory: Skirt  
Skirt Group: Eight-gore  
Skirt Style: Fitted and Flared  
Waist Treatment: Waistband Template  
Waistband: Side Closure

*Comments:*

- ◆ Similar to Fitted Gore, except some flare is added starting at the hipline.



*Skirt Group: 8-Gore*  
*Skirt Style: Gather-Waist Straight*



*Combination:*  
Category: Bottom  
Subcategory: Skirt  
Skirt Group: Eight-gore  
Skirt Style: Gather-Waist Straight  
Waist Treatment: Waistband Template  
Waistband: Side Closure

*Comments:*

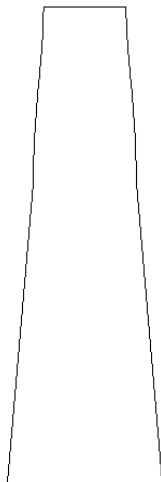
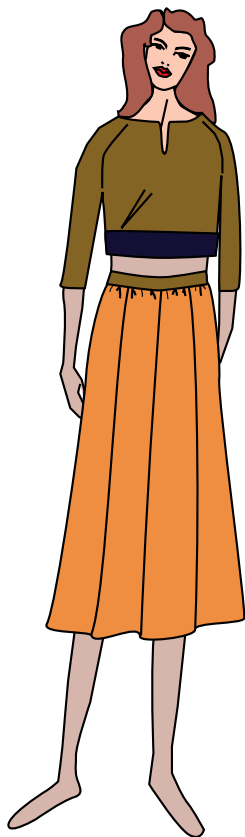
- ◆ Similar to Fitted Gore skirt, except the waist is cut wider to be gathered to a waistband, or to be used with an elastic waist finish. The skirt hangs straight from the hipline.



## Skirt Subcategory, Skirt Group: 8-Gore, cont'd

*Skirt Group: 8-Gore*

*Skirt Style: Gather-Waist Flared 1*



*Combination:*

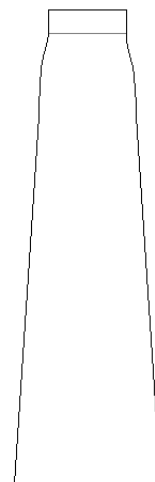
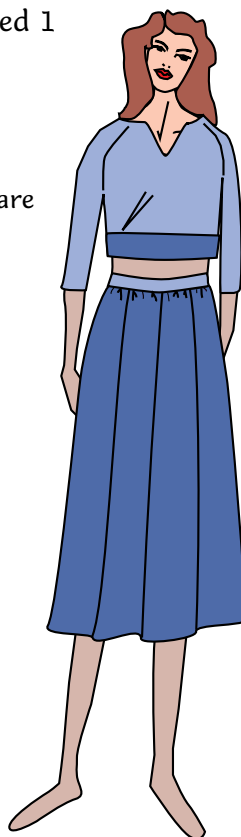
Category: Bottom  
Subcategory: Skirt  
Skirt Group: Eight-gore  
Skirt Style: Gather-Waist Flared 1  
Waist Treatment: Elastic

*Comments:*

- ◆ Gathered at the waist with flare beginning at the hipline.

*Skirt Group: 8-Gore*

*Skirt Style: Gather-Waist Flared 2*



*Combination:*

Category: Bottom  
Subcategory: Skirt  
Skirt Group: Eight-gore  
Skirt Style: Gather-Waist  
Flared 2  
Waist Treatment: Elastic with  
Casing

*Comments:*

- ◆ Gathered at the waist with flare beginning slightly above the hip.

*Skirt Group: 8-Gore*

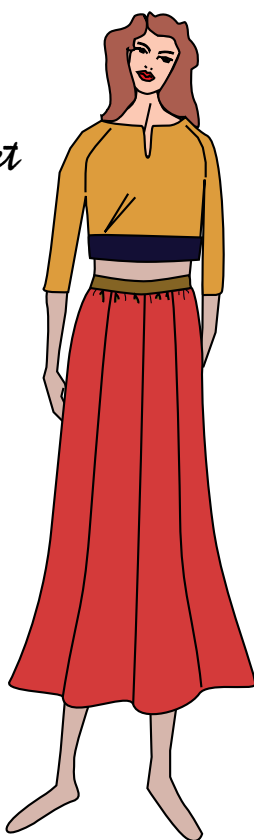
*Skirt Style: Gather-Waist Trumpet*

*Combination:*

Category: Bottom  
Subcategory: Skirt  
Skirt Group: Eight-gore  
Skirt Style: Gather-Waist Trumpet  
Waist Treatment: Elastic with Casing

*Comments:*

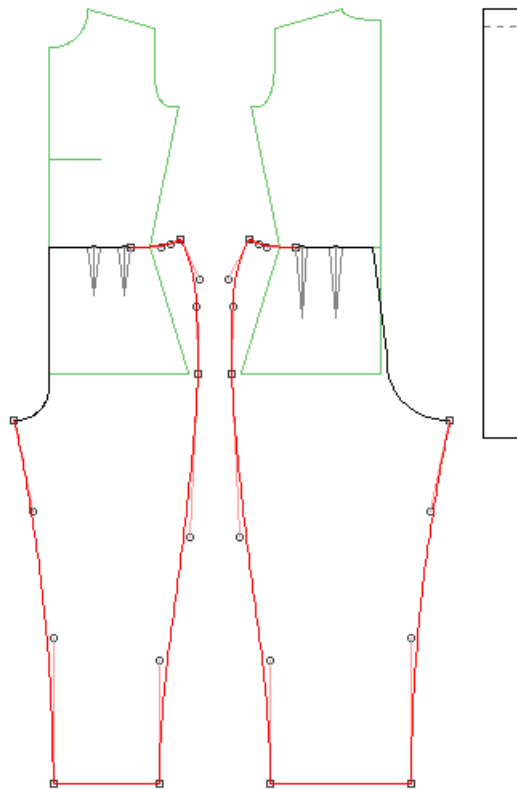
- ◆ The skirt fits slim to approximately the knee level and then flares.
- ◆ Adjust the flare as desired to achieve varying levels of 'petal' effect.
- ◆ This style is longer than the other gore skirt styles.



# Pant Subcategory, Pant Group: Generic Template

## Pants Group: Generic Template

### Pants Style: Curved Seams



#### Combination:

Category: Bottom  
Subcategory: Pants  
Pants Group: Generic Template  
Pants Style: Curved Seams  
Waist Treatment: Waistband Template  
Waistband: Front Closure Women  
Waist Darts: Double Trued

#### Comments:

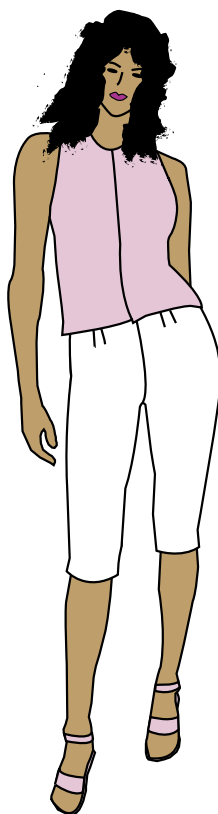
- ◆ Use this style to achieve greater contour fit in pants.
- ◆ This style is good for people who have 'other than average' calves or thighs and need to adjust the curves accordingly.
- ◆ More curve has been added to the outer waist area.

#### Combination:

Category: Bottom  
Subcategory: Pants  
Pants Group: Generic Template  
Pants Style: Capri  
Waist Treatment: Waistband Template  
Waistband: Front Closure Women  
Waist Darts: Double Trued

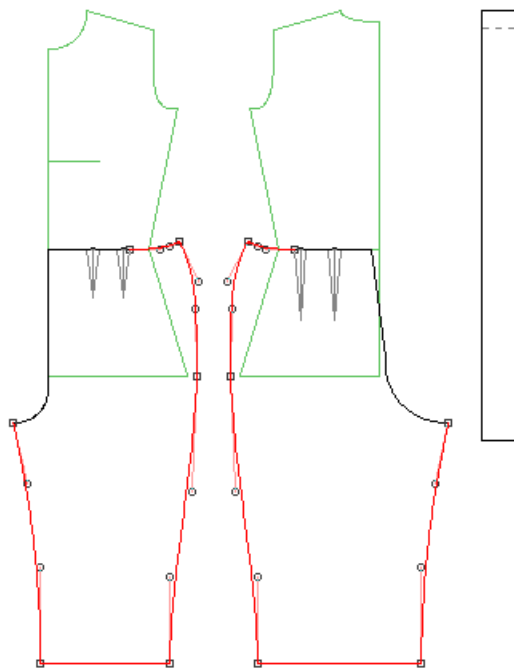
#### Comments:

- ◆ Check your desired fit at the knee by measuring around your knee with a tape. Compare this to the pattern and adjust as necessary.
- ◆ See Curved Seams style for additional comments.



## Pants Group: Generic Template

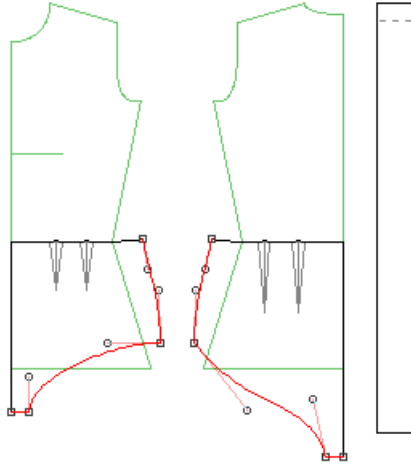
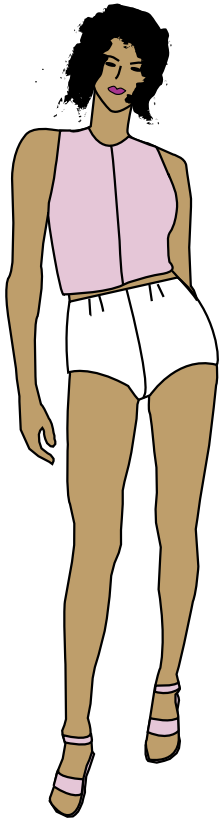
### Pants Style: Capri



# Pant Subcategory, Pant Group: Generic Template

## Pants Group: Generic Template

### Pants Style: Underwear 1



#### Combination:

Category: Bottom  
Subcategory: Pants  
Pants Group: Generic Template  
Pants Style: Underwear 1  
Waist Treatment: Waistband Template  
Waistband: Back Closure  
Waist Darts: Double Trued

#### Comments:

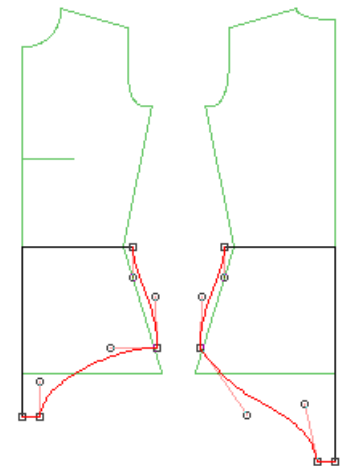
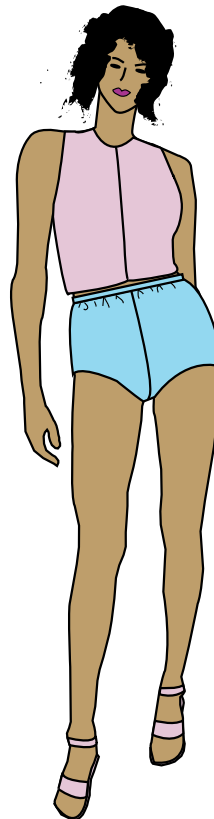
- ◆ This style is cut fuller at the waist, requiring darts or more gathering.
- ◆ Use either of the underwear styles to create body suits (use Top Plus Bottom mode).
- ◆ This style uses your hip depth to determine the depth of the underwear. If you have used a shorter than average hip depth (due to a tummy or other body shape situation, you may need to alter the depth/length of the garment. Use your crotch length measurement as a guide.
- ◆ You may use either style for men's undergarments. Simply widen the crotch.

#### Comments:

- ◆ This style is cut slimmer at the waist, requiring easing.
- ◆ If you plan to use elastic, ensure that the waist will go over the hip or change to Underwear 1 style.
- ◆ This style uses your hip depth to determine the depth of the underwear. If you have used a shorter than average hip depth (due to a tummy or other body shape situation, you may need to alter the depth/length of the garment. Use your crotch length measurement as a guide.

## Pants Group: Generic Template

### Pants Style: Underwear 2



#### Combination:

Category: Bottom  
Subcategory: Pants  
Pants Group: Generic Template  
Pants Style: Underwear 2  
Waist Treatment: Elastic