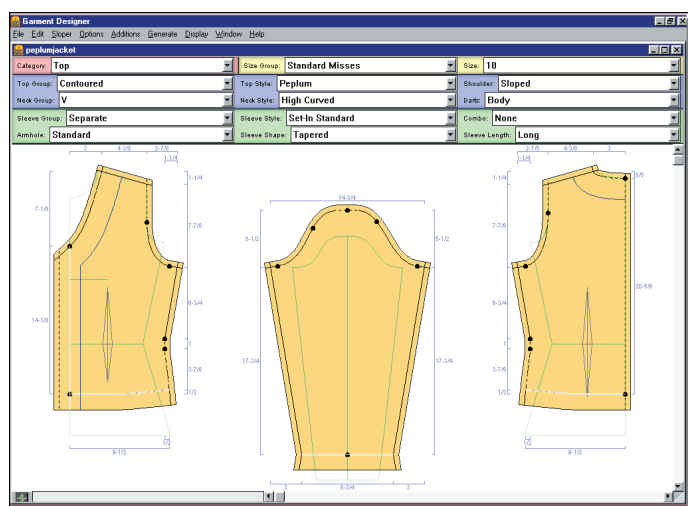


Garment Designer Pattern Software (Windows or Mac)



Fit Control

- ◆ Standard sizes for women (Misses, Women, Petite, Junior), Men, Children, Toddlers, Infants, and Dolls.
- ◆ Simple-Fit or Refined-Fit custom slopers
- ◆ Darts,
- ◆ Built-in armhole/sleeve cap intelligence.

Lots of Styles

- ◆ Tops, Dresses, Skirts, Pants
- ◆ Set-In, Raglan and Saddle Shoulder sleeve/armhole plus Kimono, Dolman and other Sleeves.
- ◆ Numerous necklines, armholes and sleeve styles.

Numerous Display and Print Modes

- ◆ View garment Dimensions in inches or metric
- ◆ Display and print schematics of your patterns.
- ◆ Print patterns in multiple scales, including 1/8, 1/4, 1/3, 1/2 and actual size.
- ◆ Choose the optional grid on patterns to assist with pattern layout and creative endeavors.
- ◆ Enjoy 'pattern intelligence' designed to keep your patterns worry-free.
- ◆ Add Custom Seam Allowances, Facings, Extensions, Hems.
- ◆ Click on a line or group of lines and let Designer measure them for you!
- ◆ Use the Pattern Layout mode to assist in determining yardage needs for your project.
- ◆ Determine yarn yardage/weight needs for knitting.

Price: \$199.00

Optional Style Sets 1&2: \$25.00 ea.

(50 style options in each to mix and match with original styles).

Computer Requirements

- ◆ Windows XP - Windows 11
 - ◆ Macintosh Mac, OSX 10.13 - 15 (Sequoia)
- A software license is used. You may install on your desktop and portable.
- Many other products available through Cochenille

It's creative! It's easy! It's fun!

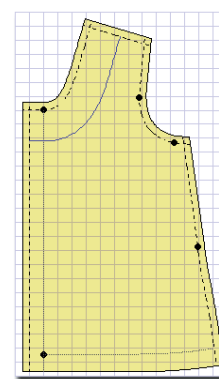
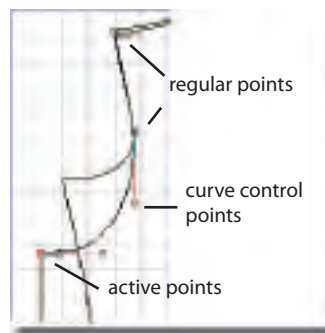
Garment Designer is an easy-to-use pattern design program that allows you to create unique garments. With its built-in standard sizes, or custom-fit option, you can create garments for your family and friends. Works for sewing and/or knitting!

Whether you are copying a ready-to-wear style or creating your own design, you will start a pattern by choosing the style options you want to combine. Further customize the garment by moving pattern points and lines on the screen. When you are satisfied with your design, add any combination of hems, extensions, facings, bands and seam allowances. Then print a paper pattern for sewing (pages will tile), or shaping instructions for knitting. If you are a novice patternmaker, you will be able to create a full wardrobe of unique and personal patterns.

Design Flexibility and Control

- ◆ View your body's shape sitting inside the pattern as you develop it.
- ◆ Build thousands of pattern combinations by mixing and matching garment styles for the body, neckline, shoulder, armhole, sleeve, skirt and pants.
- ◆ Click and drag points and use Bezier curves for complete design control.
- ◆ Instantly measure lines and curves of the pattern as you work.
- ◆ Use the Symmetry function to ensure that pattern changes occur on all pattern pieces.
- ◆ Add extensions, hems, facings, bands and seam allowances effortlessly.

Click and drag pattern editing



Final pattern mode

Cochenille Design Studio

P.O. Box 235604, Encinitas, CA 92023-5604 USA

(858)-259-1698

www.cochenille.com

info@cochenille.com

Education Discounts Available for Schools