

STYLE SETS FOR GARMENT DESIGNER

COCHENILLE FACT SHEET

DESCRIPTION

Style Sets are a way for Garment Designer Pattern software users to update their software with additional styles. Known as a Plug-In, each Style Set contains approximately 45-50 new styles, all of which mix and match with the existing styles in the program. This expands the combinations of styles you can create exponentially. An additional advantage to the adventurous soul is that you will have more combinations of where the straight and curved lines are in styles which is helpful when you are pushing the edge a bit in doing your own thing.

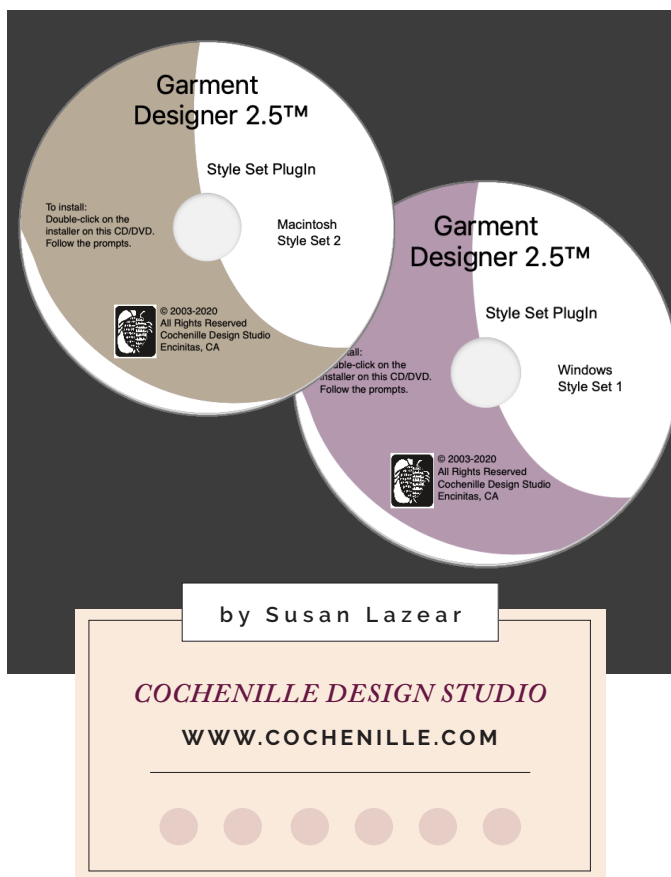
Currently Available: Style Set 1, Style Set 2
Windows or Mac

HOW TO USE

1. Run the installer that you have downloaded or received in the mail. You will be asked to confirm that it found the correct Garment Designer folder.
2. You can ensure that the Style Set is installed by looking in the Plug-Ins folder which sits inside of Garment Designer's folder, OR you can press and hold the **Shift** key while you choose **About Garment Designer** from the Garment Designer menu (Mac) or the Help Menu (Windows).
3. Then, when you open Garment Designer, you will find that number of styles in various style menus have grown. You now have more options for design.

OTHER FEATURES

The Style Set e-booklet that is included with each style set shows you a garment made with each new style. This allows you to see the combination of styles that were put together to create the overall look.



INCLUDES

- Style Set Installer file
- Illustrated e-Booklet (PDF) for each set (20 - 25 pages_ which demonstrates individual styles.

AUDIENCE

- Garment Designer owners

PRICE AND DELIVERY

- \$25.00 per set
- Digital Download or CD
- Requires Adobe Acrobat for booklet

Style Set E-booklets may be downloaded from the website for free

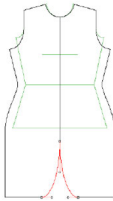
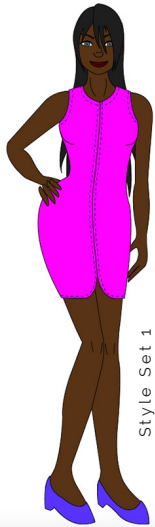


continued

STYLE SETS FOR GARMENT DESIGNER

COCHENILLE FACT SHEET

SAMPLE STYLES



Contoured Center Round Hem

Combination:
Category: Dress
Dress Group: Contoured
Dress Style: Center Round Hem
Shoulder: Sloped
Neck Group: Round
Neck Style: Standard
Darts: None
Sleeve Group: Sleeveless
Armhole: Standard

Comments:

- Garment Length is measured to the lower side seam points.
- Most of the Asymmetrical neck styles will extend straight from the CF line (as opposed to continuing on the angle).



Straight Cap

Combination:
Category: Top
Top Group: Basic
Top Style: Semi-Fitted
Shoulder: Sloped
Neck Group: Round
Neck Style: Standard
Darts: None
Sleeve Group: Cap
Cap Style: Straight

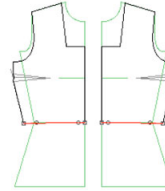
Comments:

- The shoulder seam of a cap-sleeve style must be the same on front and back, thus averaged measurements must be used.

Style Set 1



Top Style: Waist-Length Fitted

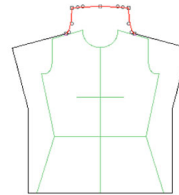


Combination:
Category: Top
Top Group: Contoured
Top Style: Waist-Length Fitted
Curve
Shoulder: Sloped
Neck Group: Square
Neck Style: Angled
Darts: Side Trued
Sleeve Group: Separate
Sleeve Style: Set-In
Combo: None
Armhole: Standard
Sleeve Shape: Tapered
Sleeve Length: Long



Style Set 2

Neck Group: Specialty Neck Style: Tall Wide Funnel



Combination:
Category: Top
Top Group: Basic
Top Style: Fitted
Shoulder: Sloped
Neck Group: Specialty
Neck Style: Tall Wide Funnel
Darts: None
Sleeve Group: Cap (SS1)
Cap Style: Angled

Comments:

- ♦ This style is best created with a soft fabric or knit.
- ♦ Funnel necklines do not work with Raglan or Saddle Shoulder styles.
- ♦ The skirt illustrated here could be achieved by splicing the paper pattern of your skirt pattern and cutting two fabrics.



Style Set 2

Foldback I Collar

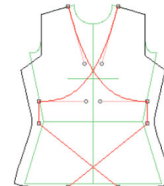
Combination:
Category: Top
Top Group: Basic
Top Style: Semi-Fitted
Shoulder: Sloped
Neck Group: Collar-Style
Collar Style: Foldback I
Darts: None
Sleeve Group: Separate
Sleeve Style: Set-In Standard
Combo: None
Armhole: Standard
Sleeve Shape: Tapered
Sleeve Length: Medium

Comments:

- This is the widest fold-back collar of the group.
- If you would like an asymmetrical neckline, you will need to create it manually using symmetry.



Neck Group: Asymmetrical Neck Style: Angled



Comments:

- ♦ Numerous looks can be achieved by moving points around on this style.
- ♦ This neckline doesn't work with all short body styles. You may need to adjust points to correct the pattern.

Combination:
Category: Top
Top Group: Contoured
Top Style: Fitted
Shoulder: Sloped
Neck Group: Asymmetrical
Neck Style: Angled
Darts: None
Sleeve Group: Separate
Sleeve Style: Full-Fashioned (SS1)
Combo: None
Armhole: Standard
Sleeve Shape: Tapered
Sleeve Length: Long



Style Set 2

Style Set 1



MORE INFO / TO PURCHASE

INFO: <https://www.cochenille.com/garment-designer/garment-designer-plugin-ins/>

SHOP: <https://shop.cochenille.com/collections/garment-designer-plugin-ins>

YouTube: https://www.youtube.com/watch?v=Jnbg7PNxbzo&feature=emb_logo